

EASY GROW LTD
Horticultural Distribution

GROWERS HANDBOOK

EASY GROW PRODUCT CATALOGUE



Easy Grow have been supplying horticultural and hydroponic wholesalers with high quality products since 2005, to over 30 countries worldwide.

As an award winning exporter, Easy Grow have a manufacturing standard second to none with an AA BRC Rated certification in storage & distribution. If you're looking for high quality hydroponic wholesale equipment, Easy Grow have what you're looking for.

And remember...

KEEP ON GROWING!

www.easy-grow.co.uk

SOCIAL MEDIA

Instagram - @easygrowuk

Facebook - EasyGrow

Twitter - EasyGrowUK



CONTENTS

FOR THE LATEST RRP'S PLEASE VISIT OUR
WEBSITE AT WWW.EASY-GROW.CO.UK

Horticultural Sheeting	pages 8 – 16
Horticultural Tapes & Bagging	pages 17 – 19
ONA Odour Neutraliser	pages 20 – 26
Nutrients & Additives	pages 27 – 73
Athena Nutrients	pages 28 – 35
BioTabs Organic Fertilisers	pages 38 – 41
Green Planet Nutrients	pages 42 – 51
Bio Nova	pages 54 – 57
RAW Soluble	pages 58 – 65
Remo Nutrients	pages 68 – 71
Microbe Life Hydroponics	pages 72 – 73
NPK Industries	page 73
CO ₂ Enrichment	pages 74 – 75
Horticultural Lighting	pages 79 – 82
Plant Health	pages 84 – 86
Bokashi Pro-Gro	page 85
Hygrozyme	page 85
Seed Excel	page 85
Temp Humidity Meter	page 85
Lockdown Pads	page 86
Propagation	pages 87 – 89
Plug Life	pages 88 – 89
BioTabs Seed Plugs	page 89
Ventilation & Air Circulation	pages 92 – 94
Fans	page 93
Combi-Ducting	page 93
Alu Flex Ducting	page 93
Sound Trap Ducting	page 93
Pro Flower Filter	page 94
Adjustvent	page 94
Growing Accessories	pages 95 – 99
Easy Grow Horticultural Equipment	pages 96 – 99
VAPR Nano Spray Gun	page 98
Information	pages 100 – 102
Support	page 101
Easy Grow Resources	page 102

WHAT'S NEW

Ensuring that our customers get the best products is our priority. We take the upmost care in choosing the products we sell, we're well aware that the products you use to grow dictate how well your crop, fruits or plants smell, taste and look. When we pick products to sell, we do it for good reason, we've partnered up with some incredible new brands which we think are some of the best out there.



AutoMist

ON-THE-GO ODOUR NEUTRALISATION

An on-the-go odour neutralisation product created for your vehicles keeping them smelling fresh and clean.

Find the AutoMist on page 23.



ATHENA

Athena exists to support the modern grower, no matter the scale. Their core principle is to develop and validate superior products that improve quality, reduce costs and drive consistency.

Find the full range on pages 28 – 35

PRO



Built for the Professional. designed for large-scale growers.

BLENDED

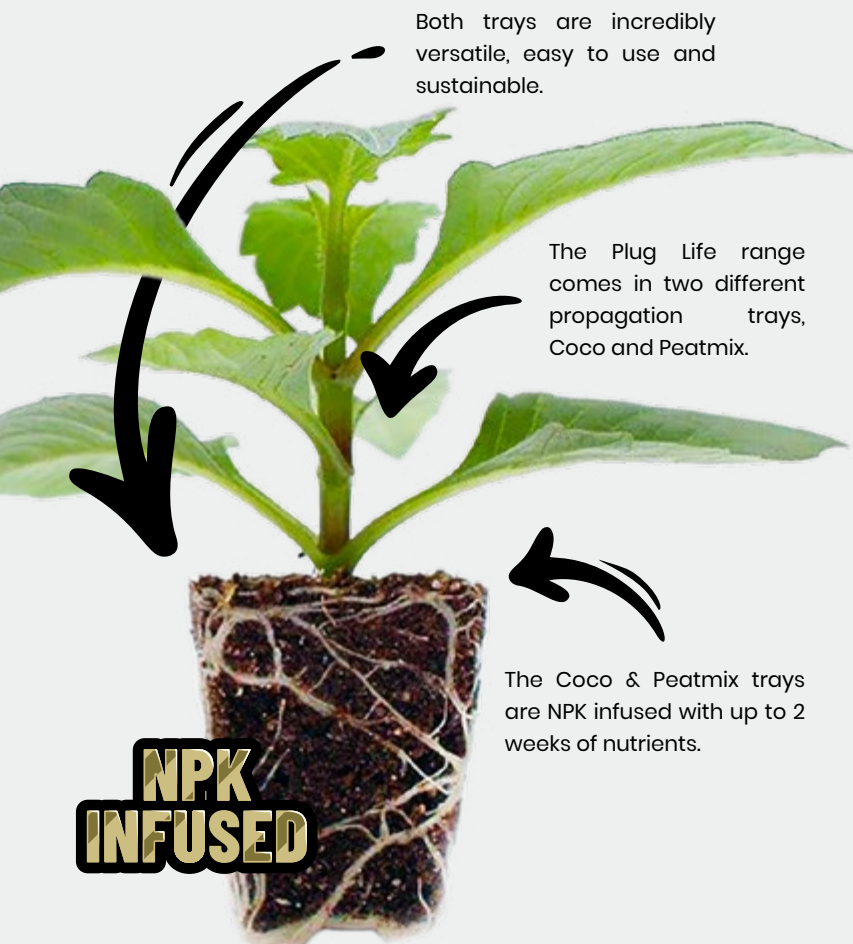


Simplicity in a bottle, Ideal for hobby and home growers.



For prices and latest RRP's visit www.easy-grow.co.uk

BIO TABS



Both trays are incredibly versatile, easy to use and sustainable.

The Plug Life range comes in two different propagation trays, Coco and Peatmix.

The Coco & Peatmix trays are NPK infused with up to 2 weeks of nutrients.

**NPK
INFUSED**



HORTICULTURAL PROPAGATION TRAYS

New and innovative propagation trays developed to give your plants the healthiest and happiest start to their grow. These ready to use plugs are a versatile and sustainable way to grow your new seedlings or cuttings.

View the full range on pages 88 – 89.



BioTabs stimulates soil organisms by converting organic material into ideal organic plant food. In this way, plants develop strong root systems and are disease-resistant as they grow towards fruition.

The products BioTabs offer are all natural fertilisers for plants and fully organic soil improvers, all 100% certified organic.

View the full range on pages 38 – 41.



BIOTABS™

Slow-release organic fertiliser. Available in 10 or 100 piece packs.



PK BOOSTER

Yield enhancing organic compost. Available in 750ml & 2.5Ltr bottles.

ORGATREX™

Organic growth and flowering booster. Available in 1Ltr & 5Ltr bottles.



For prices and latest RRP's visit www.easy-grow.co.uk

Creating a Sustainable Growing Environment

And cut those energy costs by ~~£££~~



Aiming to create a more sustainable growing environment should be the end goal for every grower (other than making sure your plants are happy and healthy, obviously). The ever-increasing cost of energy should be on the mind of every grower when it comes to setting up a new growing environment.

We've taken a look in to some ways that you can save on energy costs. If this is your first ever grow, or even if you're a seasoned veteran, we think we've got some great ideas that can help.

The first thing we want to cover is understanding the scope of what goes into building up a good growing environment. Fruits, vegetables and other plants need grow lights, ventilation, water and climate controlled growing conditions for photosynthesis in order to ensure a healthy growth. The only problem is, some of these components are powerful and will consume a lot of energy in order to run.

Here at Easy Grow, we sell some fantastic products which will help you create a more sustainable, energy saving growing environment. If you have any questions regarding these products, or if you are an end user looking for these products, get in touch with us and we will be happy to help.

The Size of your Growing Environment

Planning out the size of your growing environment is probably one of the best things you can do before you begin building it up. Knowing the size of your grow area will dictate a lot of the decisions you make in terms of what components are needed, their size, power and type. To put this in to perspective, we estimate that a fully kitted out growing operation in a small 1.2 x 1.2 x 2.4m grow area will consume around 13,000KW/h per year. So, knowing your space and utilising it in the best possible way is incredibly important.

Cost Effective Plant Nutrition

Ensuring that your plants have everything they need in terms of nutrition can be an expensive task. A lot of nutrients on the market come to you in pre-mixed bottles that you can further dilute before using. However, this convenience comes at a cost. It can be much more efficient to begin your journey with a dry nutrient which you mix for yourself. These soluble powders also tend to have a much longer shelf life and so can be purchased in larger quantities, providing you with further savings.

RAW=Soluble is a completely individualised, 100% water soluble nutrient range, carrying all of the essential nutrient elements as individual powders, alongside a complete grow and complete bloom mix. You can create your own nutrient recipes from these powders and significantly reduce costs without sacrificing the quality of nutrition provided to your plants.



Another dry nutrient stocked by Easy Grow is the Athena Pro range, a combination of three products; Athena Pro Grow, Athena Pro Bloom and Athena Pro Core. These products are targeted to the more advanced grower and can be used with specific dosage instructions to provide one of the best nutrient programs available today.



Switching to LED Lighting

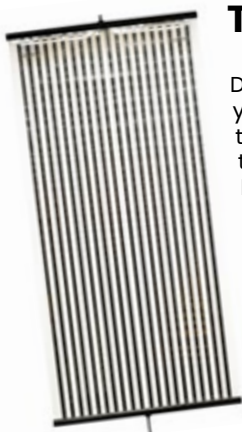
When you are growing indoors, beginners and veterans alike should know that light is vital to ensure your plants grow healthily and provide you with maximum yields. So why make the switch to LED lighting? To put it into simple terms, despite LED lights being more expensive to purchase, LED's run much more efficiently and in the long run will save you money.

When it comes to sustainability in your growing environment, switching to LED is a must. But there are a few things you need to know in order to get the most out of this switch. You should consider the spectrum of your lights, the spacing between the lights and your plants and the distribution over the growing area. The combination of these elements will help you when choosing which light you need.

There are a few other factors to take into consideration when making the switch, so what are they?

Environment temperature is one of the biggest and most notable factors. LED lights produce a lot less radiant heat than traditional HID lighting. With HID lighting you will often find you are having to combat higher ambient temperatures due to the heat they give off, meaning you use more energy with more fans, or other air circulation products to control the environment temperature.

Here at Easy Grow, we deal with Lumatek lighting systems, whilst there are hundreds of brands out there, we feel that Lumatek offer a higher quality product with superb reliability and support, whilst also providing an extremely comprehensive range to cater for all sizes of growing environments. You can view the range of Lumatek LED Lighting supplied by Easy Grow on our website at www.easy-grow.co.uk.



Turn up the Heat!

During the colder months of the year, you may even need to increase the temperature in your grow area, for these occasions we have a fantastic, low power product; our ultra-flat, infrared grow room heater. This will help to maintain constant temperatures efficiently and effectively without taking up space; it can be hung from a hook as easily as a poster. The temperature and humidity can both be monitored with the Easy Grow Temperature and Humidity meter to ensure that your environment is on track for optimal results.

Enhancing your Lighting System

When you have chosen suitable lighting for your growing area, you can further enhance the efficiency by utilising sheeting products to reflect light back on to your plants. Easy Grow offer a range of reflective sheeting including ECO, Lightite® and Lightite® Pro. Our silver sheeting products offer the ultimate in reflectivity and provide maximum reflection of light lumens, while our diamond sheeting variants come with a raised diamond pattern to diffuse and spread light more evenly over the canopy of your plants.



Using an entirely light proof sheeting product such as Lightite®, you can be sure that there is no light escaping from your growing environment, allowing you to scale down the power requirements of your lighting solution and further reduce energy costs.

CO₂ Is Important!



When plants are able to maximise the process of photosynthesis, the result is larger plants with larger yields. However, plants growing indoors under artificial light often lack CO₂ to efficiently photosynthesise. Natural solutions are usually the best solutions and it is no different when adding CO₂ to your grow area. Our ExHale CO₂ bags provide a constant output of CO₂ for 6 months! When expired, the bag contents can even be used as a soil amendment to provide your plants with further nutrition. ExHale CO₂ bags really are a master class in sustainability. Even the bags themselves are 100% recyclable.



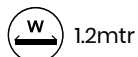
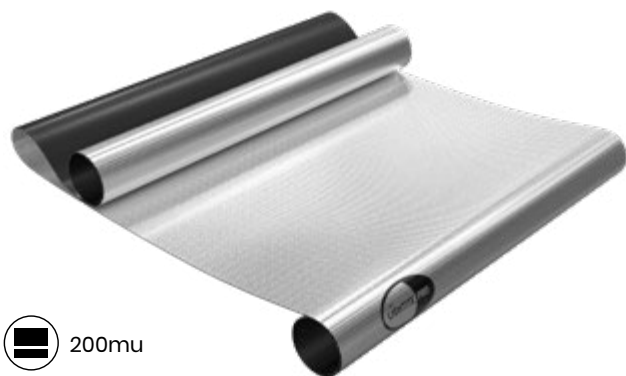


01.

HORTICULTURAL SHEETING

HORTICULTURAL SHEETING

Diamond Lightite® Pro



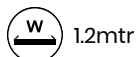
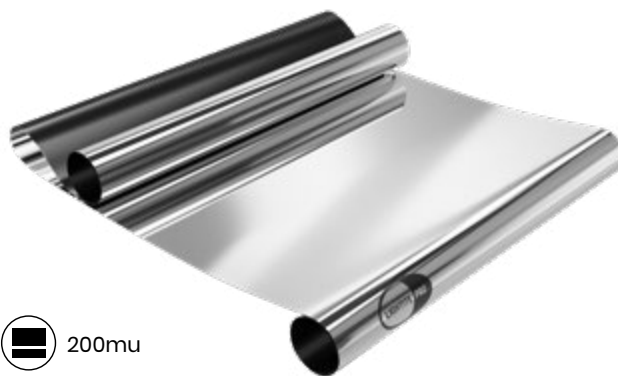
The Lightite Pro range is the strongest sheeting available in the industry, designed for the professional grower, at 200mu thick it is our most thermally reflective sheeting.

It has a raised diamond diffused pattern to spread light more evenly over the canopy of the plant.

Available Sizes: 100mtr / 30mtr / 10mtr / 5mtr

HORTICULTURAL SHEETING

Silver Lightite® Pro



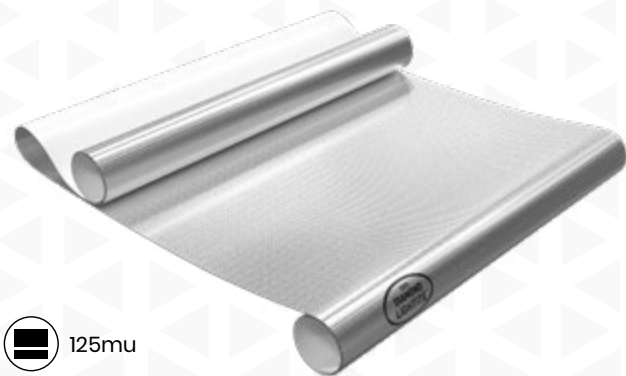
The Lightite Pro range is the strongest sheeting available in the industry, designed for the professional grower, at 200mu thick it is our most thermally reflective sheeting.

Lightite silver/black grow sheets offer optimum light return and are 100% light tight. PET coated to protect against corrosion and wear.

Available Sizes: 100mtr / 30mtr / 10mtr / 5mtr

HORTICULTURAL SHEETING

Diamond Lightite®



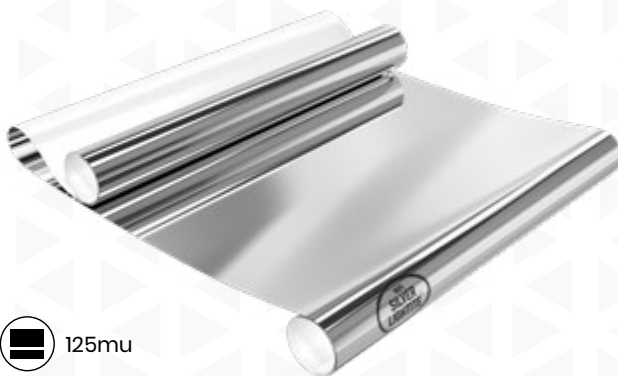
Where it all began, Diamond Lightite from the Easy Grow premium Lightite range, was one of our original products from 2005 and is still going strong.

The flagship of the Diamond Lightite range, it has a raised diamond diffused pattern to spread light more evenly over the canopy of the plant.

Available Sizes: 100mtr / 30mtr / 10mtr / 5mtr

HORTICULTURAL SHEETING

Silver/White Lightite®



Silver White Lightite is a yield increasing, spectrum enhanced silver reflector, applied to a gloss white/triple layered grow sheet. PET coated to protect against corrosion and wear.

Silver Lightite Sheeting is 5 layers thick to ensure a complete blackout, it is completely lightproof.

Available Sizes: 100mtr / 30mtr / 10mtr / 5mtr

For prices and latest RRP's visit
www.easy-grow.co.uk

HORTICULTURAL SHEETING

White Lightite® 2 METRE WIDTH



120mu

2mtr

100% White Lightite® triple layered grow sheet with a centre fold. White both sides of the sheet but light tight to allow separate light cycles to perform within the same area.

White lightite provides better all round plant growth with increased yields.

Available Sizes: 100mtr / 30mtr / 10mtr / 5mtr

HORTICULTURAL SHEETING

White Lightite® 3 METRE WIDTH



120mu

3mtr

100% White Lightite® triple layered grow sheet with a centre fold. White both sides of the sheet but light tight to allow separate light cycles to perform within the same area.

White lightite provides better all round plant growth with increased yields.

Available Sizes: 100mtr / 30mtr / 10mtr / 5mtr

HORTICULTURAL SHEETING

Diamond ECO



75mu

1.2mtr

Diamond Eco Diffusion – with diffused pattern to spread light more evenly. Produced to help eliminate grow room hot spots. Membrane memory to dramatically reduce creasing effects & PET coated to protect against corrosion and wear.

Part of the ECO Sheeting range.

Available Sizes: 100mtr / 30mtr / 10mtr / 5mtr

For prices and latest RRP's visit
www.easy-grow.co.uk

HORTICULTURAL SHEETING

Silver ECO



75mu

1.2mtr

A silver white economy grow sheet to allow increased light reflection whilst supplying a safe and secure environment for growing. PET coated to protect against corrosion and wear.

Part of the ECO Sheeting range.

Available Sizes: 100mtr / 30mtr / 10mtr / 5mtr

MAXIMISE LIGHT MAXIMISE YIELD

Our professional reflective foils & sheeting reflect both light and heat thermals, to assist with controlled heat loss. Yield increasing, thermal reflecting, stimulates vigorous growth and helps stop mould and algae growth. UK manufactured using food grade material. Food safe, plant safe and non gassing guaranteed.

Our original product, Lightite was first designed and created back in 2005. With the idea of helping growers get the best possible results from their plants. We felt none of the foils on the market at the time were good enough, so we created our unique light diffusion technology. This diamond pattern increased reflection of the light off the horticultural sheeting allowing more light to reach your plants.

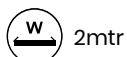
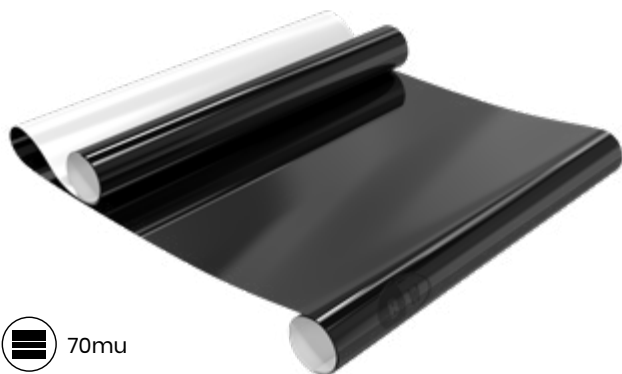
Lightite is made from 5 individual layers. Creating a completely light proof product, stopping any light from escaping along with any thermal energy.



PREMIUM HORTICULTURAL SHEETING
MADE IN THE UNITED KINGDOM

HORTICULTURAL SHEETING

Black White Sheeting^{70mu}



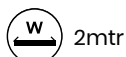
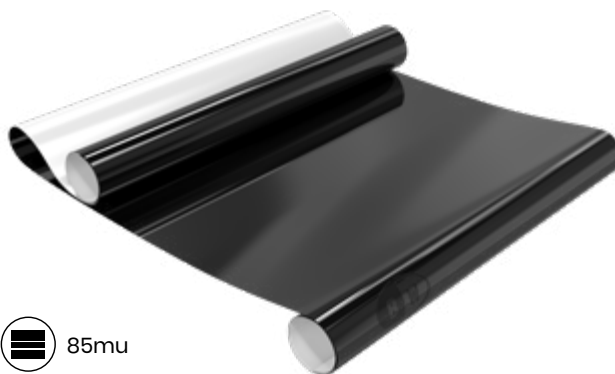
Black and White sheeting was designed to give you ultimate control over the light in your grow room.

One side is white, which gives you the power to increase light in a certain environment, while the other side is black, which helps reduce unwanted light.

Available Sizes: 100mtr / 25mtr / 10mtr / 5mtr

HORTICULTURAL SHEETING

Black White Sheeting^{85mu}



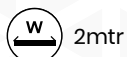
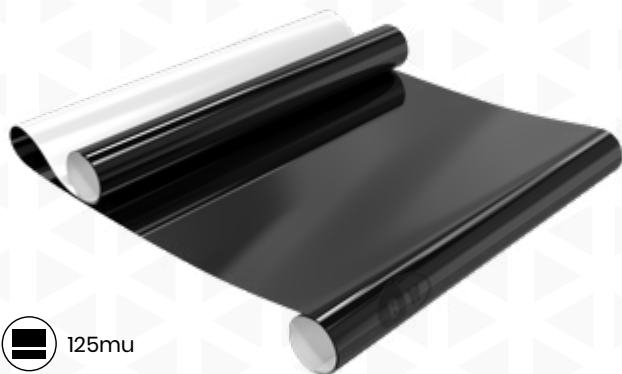
Black and White sheeting was designed to give you ultimate control over the light in your grow room.

One side is white, which gives you the power to increase light in a certain environment, while the other side is black, which helps reduce unwanted light.

Available Sizes: 100mtr / 30mtr / 10mtr / 5mtr

HORTICULTURAL SHEETING

Black White Sheeting^{125mu}



Black and White sheeting was designed to give you ultimate control over the light in your grow room.

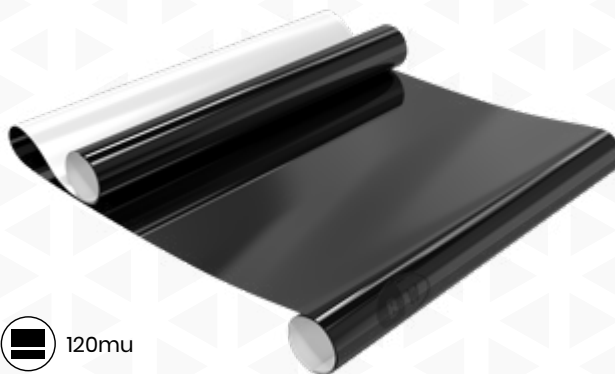
One side is white, which gives you the power to increase light in a certain environment, while the other side is black, which helps reduce unwanted light.

Available Sizes: 100mtr / 30mtr / 10mtr / 5mtr

For prices and latest RRP's visit
www.easy-grow.co.uk

HORTICULTURAL SHEETING

Black White Commercial



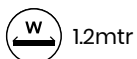
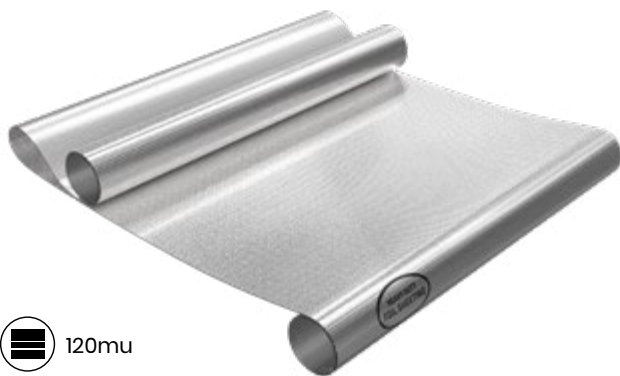
Black and White sheeting was designed to give you ultimate control over the light in your grow room.

One side is white, which gives you the power to increase light in a certain environment, while the other side is black, which helps reduce unwanted light.

Available Sizes: 25mtr

HORTICULTURAL SHEETING

Heavy Duty Diamond Foil



Ultra silver for maximum reflection, diamond diffused pattern to spread light more evenly and heavy duty to reduce the chances of ripping and creasing occurring.

Available Sizes: 100mtr / 30mtr / 10mtr / 5mtr

HORTICULTURAL SHEETING

Heavy Duty Foil



Heavy Duty Silver foil sheeting from Easy Grow for maximum light reflection.

Available Sizes: 100mtr / 30mtr / 10mtr / 5mtr




OUR SHEETING
IS DESIGNED &
MADE IN THE UK.

HORTICULTURAL SHEETING

Ultra Silver Foil^{50mu}



 50mu

 1.4mtr

Ultra Silver Foil Grow Sheet – is the ultimate reflective silver grow sheet, the perfect reflection on a dual layered silver roll. Stimulates vigorous growth.


Available Sizes: 100mtr / 30mtr / 10mtr / 5mtr

HORTICULTURAL SHEETING

White Floor Secure[®]



 250mu

 4mtr

White Floor Secure[®] has been created to save you from the worry and expense of water damage within any growing environment. This product is non-tearing and heavy duty to secure any floor and give ultimate peace of mind.

Super thick 250mu sheet for durability.

Available Sizes: 25mtr / 5mtr

HORTICULTURAL SHEETING

Silver Foil^{35mu}



 35mu

 1.4 mtr

Silver foil sheeting from Easy Grow for maximum light reflection, Provides 90-95% light reflectancy Silver both sides.

Available Sizes: 100mtr / 30mtr / 10mtr / 5mtr

For prices and latest RRP's visit
www.easy-grow.co.uk

WHY LIGHTITE?

1. MAXIMISE LIGHT & YIELD.

Maximise the light that your plants receive by using Lightite products and their unique light diffusion technology. More light means better yields from your plants.

2. REDUCE ENERGY COSTS.

With the ability to maximise the potential of the light, you will in turn reduce energy costs throughout your grow.

3. DURABLE & CONSISTENT.

Our sheeting is a durable product which provides consistently great results, ensuring your investment is worthwhile financially for both the short and long term.

4. RETAINS LIGHT LUMENS.

Reduce the loss of precious light lumens, ensuring that your plants get more light. Our fantastic range of lightite sheeting is 100% lightproof and helps to optimise the growing conditions for your plants.

Lightite Sheeting: Helping CERN Model the Birth & Death of Stars.

Easy Grow Lightite® sheeting is being used at a research facility in Switzerland to help physicists model the birth and death of stars!

The high-quality Lightite® range of grow sheets are 100% lightproof and reflect both light and heat thermals to help growers achieve maximum yields in the growing environment. The best horticultural film in the industry is now being used by scientists at CERN to build detectors of rare isotopes, due to its unrivalled reflection and highly opaque properties.

In an interview with the researcher conducting the experiments; he has told us why Lightite® Sheeting is the best solution for them and what they are trying to achieve.

Miguel Madurga Flores: Researcher at CERN

HI MIGUEL – THANKS FOR MEETING WITH US! FIRSTLY CAN YOU EXPLAIN WHAT CERN IS?

“The European Organisation for Nuclear Research, known as CERN is a European research organisation that operates the largest particle physics laboratory in the world. Established in 1954, the organisation is based in a northwest suburb of Geneva on the France–Swiss border, and has 22 member states.”

WHAT ARE YOU CURRENTLY RESEARCHING?

Our research is conducted at the ISOLDE facility, at CERN. In this experiment we produce rare isotopes, that is, atoms that have the same chemical properties as ordinary matter but different mass. These isotopes are important to understand the evolution of stars, as the only places they occur naturally are the core of stars.”

“One way to investigate the properties of these isotopes is to measure the radiation they emit. In this case we are interested that they radiate neutrons, neutral particles. In order to detect neutrons we use plastic materials that emit light when hit by radiation, think of glow-in-the-dark watch faces.”

SO WHY ARE YOU USING LIGHTITE® SHEETING AND WHAT BENEFITS DOES IT PROVIDE?

Since the efficiency of this type of material to detect radiation depends on how much light we produce and collect, we must wrap our detectors in completely opaque materials that at the same time reflect back as much light as possible. We have found Lightite® is by far the best solution for that.

The rolls you provided will be used to build a new set of detectors to increment our detection capabilities. Increased detection efficiency is crucial for us to be able to measure the more exotic and difficult-to-produce species. As so often happens in life, it turns out that the most interesting isotopes to measure are often the hardest to produce!

THAT’S VERY INTERESTING! SO WHAT WILL THE DETECTORS BE USED FOR?

“What we do with this detector is neutron energy spectroscopy, we measure the energy of the neutron radiation to understand the properties of the emitter. These properties in turn allow to fine-tune the calculations other physicists use to model the birth and death of stars.”

With great thanks to Miguel and all at CERN for providing us with the information and images of this incredible use of Lightite® sheeting in order to model the birth and death of stars.



LIGHTITE SHEETING: HOW IT'S MADE



Our Lightite sheeting is made in the UK at our manufacturing plant in Lincolnshire.

Created using only the highest quality materials, Lightite sheeting utilises five individual layers, including an aluminium layer and a PET membrane. These layers are laminated together to produce a highly reflective and lightproof product.

The sheeting is then passed through our diamond embosser to produce our unique diamond diffusion pattern.

HOW DIAMOND DIFFUSION WORKS

THE PRINCIPLE BEHIND LIGHTITE

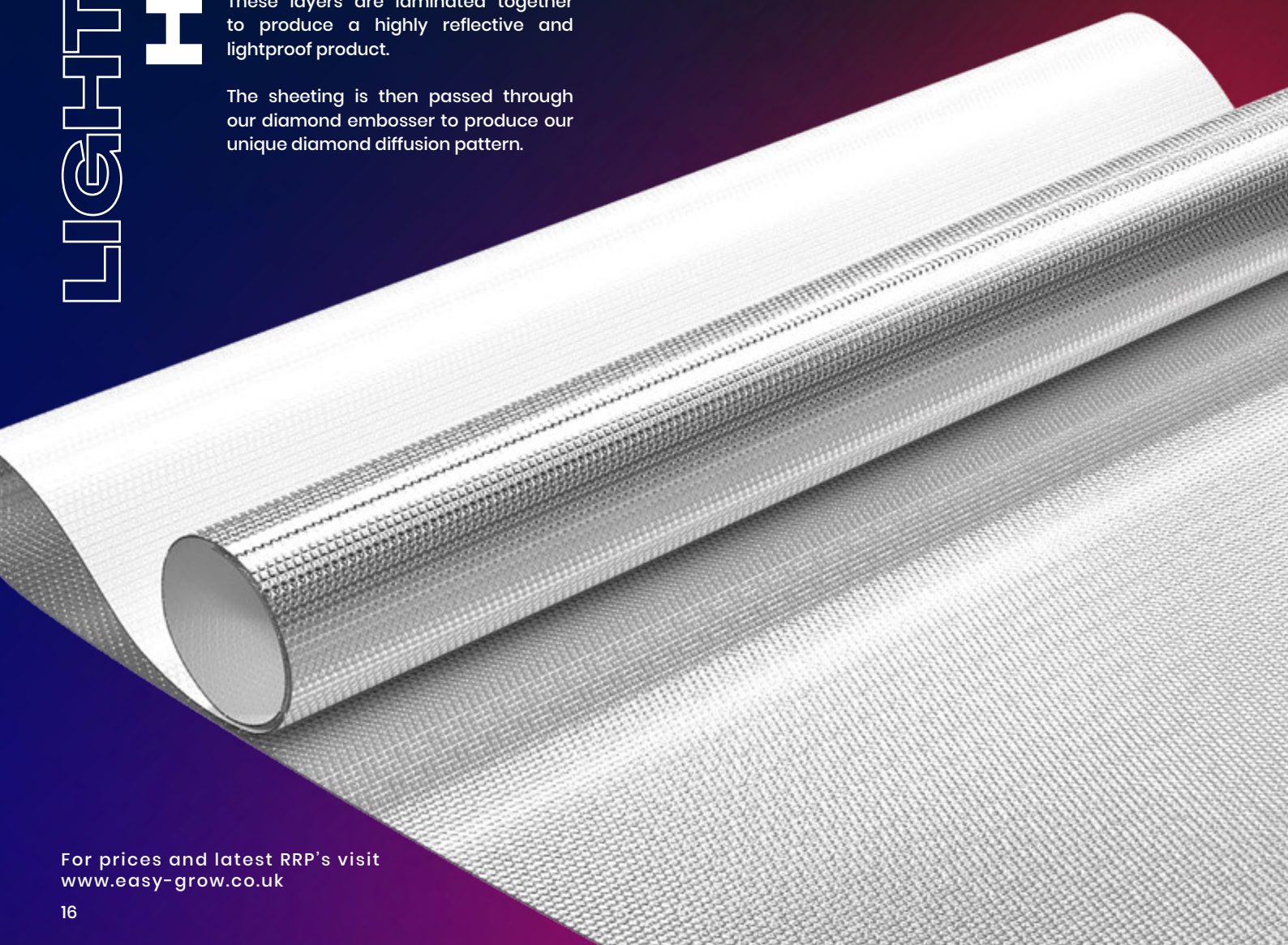
With our lightite range, we wanted to create a product that helps growers of all levels utilise light in order to increase plant health and yield by using the process of light diffusion, which is a simple, but extremely effective process.

WHAT IS LIGHT DIFFUSION?

Light diffusion can play a huge part in ensuring light is distributed in your growing environment correctly.

Light Diffusion is the process in which a material will diffuse or scatter the light by reflection or transmission. Our sheeting contains a unique diamond pattern that will enhance that diffusion and cause any light that hits it to scatter in different directions, reducing its intensity.

Usually, beams of light will focus on one spot, that could cause 'burn spots', these spots are where light is focussed in one particular area. A way to avoid this is to reduce the intensity of this direct light by scattering it in multiple directions instead of just one.





02.

HORTICULTURAL **TAPES & BAGS**

TAPES & BAGS

Metallised Heat Seal Bags



Metallised heat seal, light proof pouches provide the best way to keep your produce fresh. Available in 4 sizes – mini, small, medium and large and two colours – silver and black.

Sizes: 150mm x 250mm / 300mm x 500mm
500mm x 550mm / 500mm x 1000mm

TAPES & BAGS

Metallised Vacuum Pouch



Metallised Vacuum Pouch Silver/Clear provide convenient storage with a clear front section for product visibility and quick identification of the bag contents.

Sizes: 300mm x 500mm / 500mm x 550mm

TAPES & BAGS

Metallised Grip & Heat Seal Bags



Metallised Grip & Heat Seal Bags provide the best way to keep your produce fresh. The grip and heat seal top ensures that the bag stays sealed shut.

Sizes: 125mm x 150mm / 150mm x 250mm

For prices and latest RRP's visit
www.easy-grow.co.uk

TAPES & BAGS

Vacuum Storage Bags



Vacuum Storage Bags allow you to remove all of the air from inside the bag, reducing the original volume by up to 80%. A fantastic storage solution.

Sizes: 400mm x 600mm / 600mm x 800mm
800mm x 1000mm / 800mm x 1200mm

TAPES & BAGS

Foil, Peeled Back Tape

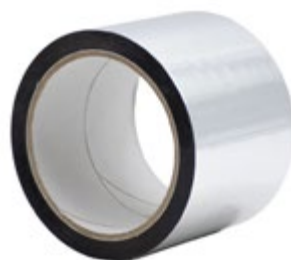


Incredibly easy to use thanks to the peel off backing and provides no loss of reflectance when taping Easy Grow sheeting together.

Sizes: 48mm x 45mtr / 75mm x 45mtr

TAPES & BAGS

Metallised Foil Tape



A quality foil tape for all ventilation and grow tent or grow room tasks, perfect for sticking together foils with no loss of reflectance.

Sizes: 75mm x 50mtr

TAPES & BAGS

Metallised X-Weave Tape



A re-inforced cross weave design preventing tears or rips, and is highly adhesive to make sure your reflective sheeting stays in place.

Available Sizes: 48mm x 45mtr / 75mm x 45mtr

TAPES & BAGS

Silver Cloth Tape



A versatile and robust cloth tape with high adhesion for interior and exterior use.

Available Sizes: 48mm x 50mtr



EASYGROW

TOPTIPS!

Use our reflective tapes to secure your reflective horticultural sheeting together, without any loss of reflectance. You can also use our tapes for air tight ducting fixtures for efficient air flow.



03.

ONA ODOUR NEUTRALISER

Neutralise Odours Naturally

Unwanted odours can occur when growing plants, and this requires the best odour control system available to prevent these odours escaping to unwanted places. We pride ourselves on distributing the very best odour control products on the market, completely neutralising unwanted odours rather than just masking them.

ONA is the original and the best in odour control. ONA has been serving the hydroponics industry since 1995. Do not be tempted by poor imitations, if you want the ultimate odour control solution, then ONA from OdorChem is the choice for you.

Natural Formula

ONA formulations have been scientifically engineered to be environmentally safe. Manufactured under strict quality controls to ensure a safe and non-toxic product.

7 Great Scents

ONA comes in 7 amazing fragrances; Apple Crumble, Fresh Linen, Polar Crystal, PRO, Tropics, Fruit Fusion & the new fragrance Lemongrass!

- | | |
|---|---|
|  Fruit Fusion |  Polar Crystal |
|  Tropics |  Fresh Linen |
|  Apple Crumble |  Pro |

ONA Works - Guaranteed

ONA is guaranteed to work! It is safe to use around people, pets & plants. Remove unwanted odours safely, naturally and permanently.

ona[®]
neutralises odours, naturally



ONA ODOUR NEUTRALISER

ONA Gel



AREA OF EFFECT

400g	15-20m ²
732g	20-25m ²
3.8Kg	70-75m ²
20Kg	400-425m ²



The ONA Gel is filled with a super absorbent polymers infused with the unique ONA formula. Simply unscrew the lid to start neutralising any odours in the environment.

Approx area coverage between 15m² – 425m² dependent on size of Gel product.

ONA ODOUR NEUTRALISER

ONA Breeze Fan



The ONA Breeze Fan has been designed to increase and speed up the distribution of ONA Gel. The Breeze fan is compatible with 732g jars and 3.8kg pails.

240 Volt Power Point Required

ONA ODOUR NEUTRALISER

ONA Cyclone Fan



The ONA Cyclone is a cost effective, high quality ONA Gel distribution system. This portable fan runs very quietly while effectively destroying odours where needed. Compatible with 20Kg ONA Gel pail

240 Volt Power Point Required

For prices and latest RRP's visit
www.easy-grow.co.uk

ONA ODOUR NEUTRALISER

ONA Block



AREA OF EFFECT

170g	15-20m ²
------	---------------------



ONA Blocks are a fast & easy way to fight against odours at their source in small sized areas. Simply open and expose to the air or remove the block from its container.

Can be used with ONA Air Filters.

Approx area coverage between 10m² – 15m²

ONA ODOUR NEUTRALISER

ONA Block Dispenser



ONA Block Dispenser is a highly effective and affordable distributor for ONA Blocks. Simply place the ONA block into the slot inside the dispenser and switch on the fan.

Requires 2 x AA Batteries (Not included)

ONA ODOUR NEUTRALISER

ONA Air Filter



- 4"
- 5"
- 6"
- 7"
- 8"
- 10"
- 12"



ONA Air Filters allow for complete and continuous air filtration of your indoor gardens air exhaust. Compatible with ONA Blocks.



AutoMist

ON-THE-GO ODOUR NEUTRALISATION

Keeping your vehicle smelling fresh, from A to B.

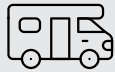
Our AutoMist vehicle mist diffuser disperses a steady, gentle mist into the air of your vehicle, removing any unwanted odours and replacing them with a natural, fresh smell created with essential oils.

The AutoMist is a quiet device that can fit perfectly in your vehicles cup holder, so it won't hang from any mirrors, or stick out from your dashboard. The colour changing feature can be set to individual colours, or a gradient mix.

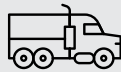
For best results, use the AutoMist diffuser with ONA Liquids. ONA Liquids will come in a concentrated state, so if too strong, dilute with water until satisfied with strength.



Car



Motorhome



Lorry



Van



The same size as a regular coffee cup! Fits in your vehicles cup holder perfectly.



USB powered, plug into your vehicle, turn on and you are good to go.



Choose between two built-in misting settings; constant and periodically.



Use with ONA products. Neutralise odours permanently & make your vehicle smell great



RGB lighting on top of the diffuser. Choose between multi-coloured and single coloured.



An on-the-go odour neutraliser, giving you a fresh smelling vehicle all day, every day.

NEUTRALISE ODOURS FOR LONGER

Same great odour
neutralising formula



ona[®]
neutralises odours, naturally

EXCLUSIVELY AT EASY GROW



ONA ODOUR NEUTRALISER

ONA Liquid



922ml
3.27Ltr
20Ltr



HANDY CARRY HANDLE



ONA Liquid is an odour neutraliser in liquid form. Add to a sprayer or dilute in water and use as a wash. The ONA Liquid can also be used to replenish the liquid in ONA Gel products.

ONA ODOUR NEUTRALISER

ONA Mist



170g



ONA Mist delivers a concentrated pressurised mist of odour neutraliser, pushing the nozzle releases a fine mist into the air which neutralises any odours it comes into contact with.

ONA ODOUR NEUTRALISER

Misting Dome



Create a relaxing atmosphere filled with the pleasant scents of ONA and remove any unwanted odours from the surrounding air. Use in conjunction with ONA Liquids.

Available in White and Green. 240 volt power point required.

ONA ODOUR NEUTRALISER

ONA Spray



250ml



ONA Spray is a pump spray bottle loaded with ONA odour neutraliser. One of our most convenient products made for every day life.

ONA ODOUR NEUTRALISER

Mist Dispenser



ONA Mist Dispenser – allowing fully automated odour control. Set it for night, day, or 24 hours. It has three programmable spray intervals. To be used in conjunction with ONA Mist.

Requires 2 x AA Batteries (Not included)

ONA ODOUR NEUTRALISER

ONA Spray Card



12ml



The ONA Spray Card is small, thin and fits easily into your pocket or bag, allowing you to have protection from odours on the move.

For prices and latest RRP's visit
www.easy-grow.co.uk

Odour Neutralisation, it's in our DNA.

ONA odour neutralising products consist of complex formulations representing a variety of chemical compounds offering different functionalities, both structural and chemical.

The technology behind ONA was initiated over 25 years ago. The scientist (who was eventually credited with the invention of ONA) became fascinated when he observed that when terpenes were diffused into the environment, emissions and odours were reduced. Inspired by this finding, further evidence showed that the odours were not just masked but permanently removed.

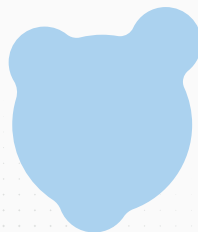
The result was a set of specialised formulations that neutralise a wide spectrum of organic and inorganic odour problems – effectively, efficiently and permanently. ONA odour neutralisation formulations have been scientifically engineered to be environmentally safe. Manufactured under strict quality controls, the components of ONA are generally recognised as common in the food industry and have a long history of safety.

Mechanisms of action.

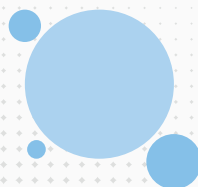
There are three mechanisms of action that can occur, based on the chemical and physical natures of each terpene and active ingredient versus the organic and inorganic volatile compounds (odours).



Absorption occurs when an ONA molecule soaks up an odour molecule, which neutralises the odour as a result.



Electrostatic and molecular forces cause ONA molecules to attract and bond with odour molecules – this is adsorption.



When a chemical reaction occurs, the combined ONA & odour molecules react, changing to create a neutral compound, eliminating the odour.



For prices and latest RRP's visit
www.easy-grow.co.uk



04.

NUTRIENTS & ADDITIVES

EASY GROW ARE OFFICIAL UK DISTRIBUTORS FOR ATHENA NUTRIENTS



THE PERFECT RUN™

BALANCED NUTRITION.
COST EFFECTIVE.
RESULTS DRIVEN.





PRO & BLENDED RANGES AVAILABLE AT EASY GROW

Athena exists to support the modern grower, no matter the scale. Their core principle is to develop and validate superior products that improve quality, reduce costs and drive consistency.

Athena was born in the grow rooms of Los Angeles, California, where they are always in pursuit of the perfect run. As the weight of being a cultivator increases, they exist to make the complex simple.

Athena was developed and tested by the Athena cultivators in conjunction with Jungle Boys. Formulated by Chris Durand, industry leader in plant biology.

**ATHENA IS NOT A NUTRIENT LINE,
IT IS A PROGRAM.**



FIND OUT MORE

Scan here to find out more about the Athena Pro and Blended product ranges.

For prices and latest RRP's visit
www.easy-grow.co.uk



TRUST THE PROGRAM



RANGE

THE **BLEND**



Ideal for hobby and home growers. Ready to use concentrates that work best for hand watering and simple irrigation setups. No dry fertiliser experience needed.

- 💧 Flexible & familiar
- 💧 Customisable for different plants and environments
- 💧 DWC Compatible
- 💧 Easy, ready to use & consistent

RANGE

THE **PRO**



Designed for professional large-scale cultivators using advanced fertigation systems (Dosatron, Netaflex, Rhythm). Those with prior experience using salt lines.

- 💧 Fully soluble powders require pre-mixing as a concentrate before batch mixing or injection
- 💧 Simple, 2-parts per stage
- 💧 Super-clean formula with no particulates or residue
- 💧 Will not clog drippers/emitters
- 💧 Will not create biofilm
- 💧 Compatible with all fertigation systems
- 💧 Long shelf life and reduced storage space – resulting in reduced freight costs

ATHENA NUTRIENTS [BLENDED]

Balance



940ml
3.78Ltr
18.92Ltr



0-0-2

Athena Balance is a simple formula of potassium silicate specifically concentrated to buffer irrigation water and stabilise to ideal pH.

ATHENA NUTRIENTS [BLENDED]

PK



940ml
3.78Ltr
18.92Ltr



0-4-5



Athena PK is a balanced bloom boosting complement to Athena Nutrients' Bloom fertilisers. This clean liquid booster is designed to supplement during the mid- to late-flowering phase.

ATHENA NUTRIENTS [BLENDED]

Cleanse



940ml
3.78Ltr
18.92Ltr



Athena Cleanse is made from the ideal (and safe) root zone optimising agents – Hypochlorous acid.

ATHENA NUTRIENTS [BLENDED]

Stack



940ml
3.78Ltr



0-0-1

Athena Stack is a natural plant nutrient made from kelp extract. The nutrients in Stack encourage healthy growth & flowering, helping plants reach their full genetic potential.

ATHENA NUTRIENTS [BLENDED]

CaMg



940ml
3.78Ltr
18.92Ltr



2-0-0

Athena CaMg is designed to supplement either of Athena Nutrients' 2-part liquid formulas when Calcium, Magnesium, Iron or Nitrogen is required during heavy growth and development phases.



For prices and latest RRP's visit
www.easy-grow.co.uk

ATHENA NUTRIENTS [BLENDED]

Grow A + B



940ml

3.78Ltr



Athena Grow is a simple and clean formula designed for the vegetative stage of growth and for non-flowering plants. Their careful balanced mineral ratios help facilitate optimal plant development including photosynthesis, healthy respiration, and robust stalk and root growth.

This 2-part blended liquid formula should be used in equal amounts during the veg phase to stimulate the rapid onset of bud production, increase flowering sites, and promote high-quality yields.

ATHENA NUTRIENTS [BLENDED]

Bloom A + B



940ml

3.78Ltr



Athena Bloom is a simple and clean 2-part formula designed for the flowering stage of growth for fruit and flower-producing plants. Athena Nutrients blend top of the line macronutrients and chelated micronutrients to achieve greater nutrient uptake ability across a wider pH range in any combination of grow method, water-type and media.

This 2-part blended liquid formula should be used in equal amounts during the flowering phase to stimulate the rapid onset of bud production, increase flowering sites, and promote high-quality yields.

ATHENA NUTRIENTS [PRO]

Pro Bloom



4.5Kg

11.36Kg



Athena Pro Bloom contributes balanced levels of macro and micro-elements including sulphur (S) used for increasing potency and flavours.

ATHENA NUTRIENTS [PRO]

Pro Grow



4.5Kg

11.36Kg



Athena Pro Grow is a balanced soluble fertiliser blend formulated for commercial cultivators to streamline irrigation.

ATHENA NUTRIENTS [PRO]

Pro Core



4.5Kg

11.36Kg



Athena Pro Core provides strong baseline nutrition across all stages of plant growth. Nitrogen to assemble chlorophyll and amino acids & calcium to build structure.

ATHENA® FAQ

WHAT'S THE DIFFERENCE BETWEEN THE BLENDED LINE & PRO LINE?

The Blended Line is ideal for use with recirculating systems but can be used with all watering systems. It is a two-part liquid formula, sediment free. Use Grow A&B or Bloom A&B in equal amounts.

The Pro Line is ideal for use with drip drain to waste systems, and dosing systems utilising stock tanks. It is a two-part powder that provides all the essential micro, macro & trace elements required for plant cultivation. Both Lines can be used in any grow medium.

SHOULD I USE AN AIRSTONE?

No. Airstones will cause pH to rise over time. We recommend using a circulation pump to keep your solution mixed.

HOW DO I PRE-SOAK CUBES?

Pre soaking cubes with the Blended Line:
3.0mL/3.79 Litres Grow A - 2.0mL/3.79 Litres CaMg
EC 0.7
PPM 550 (700 Scale)
pH 5.7

ATHENA® FEED CHARTS

All Athena® nutrients feed charts are available to view and download from the Easy Grow website.

Visit our website at www.easy-grow.co.uk/resources/feed-charts and you will find feed charts for both the Blended and Pro Line products.

Any further questions regarding the feed charts, or any other Athena Nutrient resource, please get in touch and we will be happy to help and answer any questions you may have.



PRO DOSAGE GUIDELINES

(11.3 kg Bags – Metric)

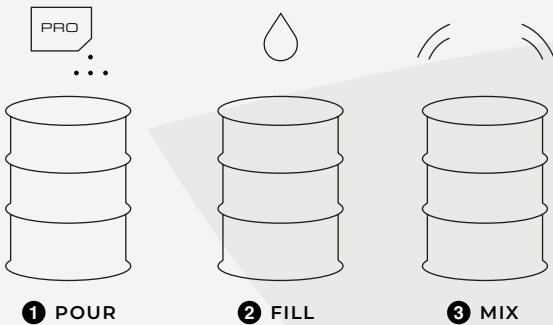


STEP 1

MAKING A STOCK CONCENTRATE

WARNING: A CONCENTRATE SHOULD NEVER BE FED DIRECTLY TO YOUR PLANTS. THE CONCENTRATE MIX IS MEANT FOR MIXING A BATCH RESERVOIR.

grams/litre	grams/3.79 L
120	454
240	908
300	1135



PROCEDURE

(for 240 grams/litre)

Get a measuring container that has accurate litre marks on it.

- 1 Slowly pour granules into stock tank filled half way with water while agitating, then mix to solubilise.
- 2 Add water until it gets exactly to the 47.3 litre mark.
- 3 Vigorously mix until all granules are solubilised.

STEP 2

MAKING A BATCH RESERVOIR

Use your concentrate to mix a reservoir to feed directly to plants.

Dosage in ml/litre for concentrate mixed at 120 g per L

TARGET EC	PRO CORE	PRO GROW /PRO BLOOM
0.5	1.3 ml	2.2 ml
1.0	3.0 ml	5.0 ml
1.5	4.6 ml	7.6 ml
2.0	6.6 ml	11.0 ml
2.5	8.5 ml	14.2 ml
2.7	9.0 ml	15.0 ml
3.0	10.2 ml	17.0 ml
3.5	12.2 ml	20.4 ml
4.0	14.3 ml	23.9 ml

Recommended Chart:

Dosage in ml/litre for concentrate mixed at 240 g per L

TARGET EC	PRO CORE	PRO GROW /PRO BLOOM
0.5	0.7 ml	1.1 ml
1.0	1.5 ml	2.5 ml
1.5	2.3 ml	3.8 ml
2.0	3.3 ml	5.5 ml
2.5	4.3 ml	7.1 ml
2.7	4.5 ml	7.5 ml
3.0	5.1 ml	8.5 ml
3.5	6.1 ml	10.2 ml
4.0	7.2 ml	11.9 ml

Dosage in ml/litre for concentrate mixed at 300 g per L

*Disclaimer - At 300 grams per liter, stock tank must be agitated.

TARGET EC	PRO CORE	PRO GROW /PRO BLOOM
0.5	0.5 ml	0.9 ml
1.0	1.2 ml	2.0 ml
1.5	1.8 ml	3.0 ml
2.0	2.6 ml	4.4 ml
2.5	3.4 ml	5.7 ml
2.7	3.6 ml	6.0 ml
3.0	4.1 ml	6.8 ml
3.5	4.9 ml	8.2 ml
4.0	5.7 ml	9.5 ml

PRO DOSAGE GUIDELINES

(4.53 kg & 11.3 kg Boxes – Metric)



STEP 1

MAKING A STOCK CONCENTRATE

WARNING: A CONCENTRATE SHOULD NEVER BE FED DIRECTLY TO YOUR PLANTS. THE CONCENTRATE MIX IS MEANT FOR MIXING A BATCH RESERVOIR.

CONCENTRATE
MIX RATE:

240
Grams/Litre

Pro Line Bag Size	Container Size
(1) 0.9 kg Bag	3.79 Litre
(1) 2.26 kg Bag	9.46 Litre



1 POUR

2 FILL

3 MIX

PROCEDURE

(for 240 grams/litre)

Get a measuring container that has accurate litre marks on it.

- 1 Empty entire contents of the **Pro Line** pouch into a thoroughly clean container.
- 2 Fill the container to exactly the 3.79 litre mark for 0.9 kg pouch or the 9.46 litre mark for 2.26 kg pouch.
- 3 Vigorously mix until all granules are solubilised.

STEP 2

MAKING A BATCH RESERVOIR

Use your concentrate to mix a reservoir to feed directly to plants.

Use the attached chart to determine the **ml per litre** of the Pro Line concentrate to achieve the desired EC in your reservoir.

For example: If you have a **189 L reservoir** and wish to feed **3.0 EC Pro Core** and **Pro Bloom** here is what to do:

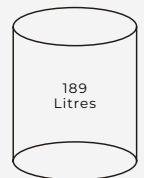


5.1 ml **Pro Core** concentrate
x 189 litres
= 964 ml concentrate
(5.1x189=964 ml)

964 1606



8.5 ml **Pro Bloom** concentrate x 189 litres
= 1606 ml concentrate
(8.5x189=1606 ml)



PROCEDURE

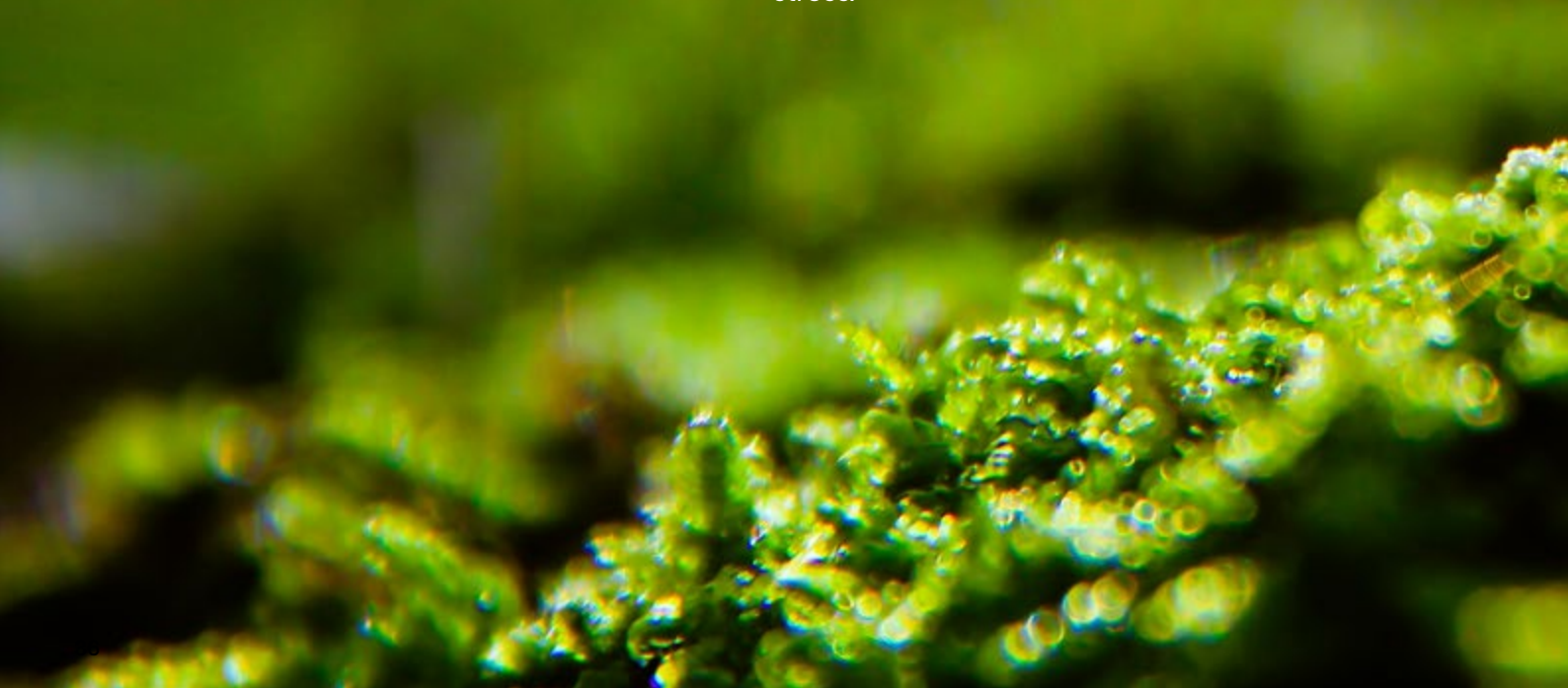
- 1 Fill reservoir with water.
- 2 Find dosage rate for desired EC.
- 3 Measure each concentrate and add to reservoir. (do not mix together)
- 4 Mix and check EC. Adjust pH with Balance.

Dosage in ml/liter for concentrate mixed at 240 grams/litre

TARGET EC	PRO CORE	PRO GROW /PRO BLOOM
0.5	0.7 ml	1.1 ml
1.0	1.5 ml	2.5 ml
1.5	2.3 ml	3.8 ml
2.0	3.3 ml	5.5 ml
2.5	4.3 ml	7.1 ml
2.7	4.5 ml	7.5 ml
3.0	5.1 ml	8.5 ml
3.5	6.1 ml	10.2 ml
4.0	7.2 ml	11.9 ml

What is Mycorrhizae?

The term mycorrhizae describes the mutually beneficial (symbiotic) relationship between specialised soil fungi and the roots of most plants on the Earth. Myco = fungus, rhizo = root. These fungi have been associated with plant roots for 460 million years, ever since plants began to grow in soil. Still further, other soil microbes become associated with the mycorrhizal fungi in the rhizosphere soil (associated with and influenced by root exudates). Then, rhizosphere soil becomes mycorrhizosphere soil: which is influenced by both fungus and the root. The mycorrhizal fungi become the interface between the soil and plant roots: the fungi colonize the roots internally, and the soil externally. Internally, the fungus becomes the interface where nutrient exchanges occur between the fungus and plant by direct contact of the fungus with the root cells: carbon energy from the plant to the fungus, and soil nutrients from the fungus to the host plant. In addition, a plant with mycorrhiza is physiologically altered due to biochemical changes that occur in the plant. Our mycorrhizal products reflect that holistic association. The benefits of that team of microbes, orchestrated by the mycorrhizal fungi, can be many, especially for plants under stress.



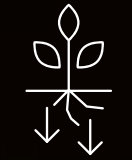
Benefits of Mycorrhizae



INCREASED YIELD



ENHANCED PLANT GROWTH



ENHANCED ROOT DEVELOPMENT



INCREASED DISEASE RESISTANCE



IMPROVED TRANSPLANT SUCCESS



INCREASED DROUGHT TOLERANCE

Since the first discovery of mycorrhizae, there have been many species and strains of mycorrhizal fungi discovered – each with its own unique characteristics, but all with the capacity to benefit plant growth and health by various means. Mycorrhizae have been shown to aid plants in the acquisition of water and nutrients, and to enable them to better tolerate such things as soil toxicity, drought, and other environmental stresses. In the soil around plant roots, they develop associations with other beneficial microbes. In agricultural systems where intense cultivation has degraded the soils over time, the mycorrhizal associations have become reduced and in many cases are not effective. Growers have been forced to compensate for their lack with applications of fertilisers and pesticides. For growers of crops in soilless media, mycorrhizal fungi and other beneficial microbes are simply not present and therefore cannot provide benefit to plants.

For prices and latest RRP's visit
www.easy-grow.co.uk

BIOTABS



AVAILABLE EXCLUSIVELY AT EASY GROW



Easy by Nature

100%
ORGANIC
CERTIFIED

THE ORGANIC WAY TO GROW



BioTabs produces organic fertilisers & organic plant food, using the force of organic soil improving organisms.

BioTabs stimulates soil organisms by converting organic material into ideal organic plant food. In this way, plants develop strong root systems and are disease-resistant as they grow towards fruition.

The products BioTabs offers are all natural fertilisers for plants and fully organic soil improvers, all 100% certified organic. BioTabs guarantees a fair, full and very tasty harvest.



FIND OUT MORE

Scan here to find out more about the BioTabs product range.



For prices and latest RRP's visit
www.easy-grow.co.uk

BIOTABS

BioTabs



10 Pcs
100 Pcs



**BEST
SELLER**

BioTabs are slow-release organic fertiliser tablets for annual plants. BioTabs contain a formula of slow-acting NPK, natural humic acids and beneficial soil bacteria.

BIOTABS

Bactrex



50g
250g



**BEST
SELLER**

BACTREX is a dry, water-soluble powder with a large number of beneficial soil bacteria and root microbes. It is a powerful and organic soil improver.

BIOTABS

Bio PK 5-8



500ml
1 Litre



Organic liquid fertiliser NPK: 2-5-8 + seaweed, vitamins, auxins and other phytohormones. The mighty Bio PK 5-8 Top-Booster from BioTabs yields large & fragrant flowers.

BIOTABS

Guerrilla Tabs



20 Pcs
200 Pcs



Guerrilla Tabs are slow-release organic fertiliser tablets, that condition the soil through microbiological activity while fertilising the plant.

BIOTABS

Guerrilla Juice



500ml



Organic Guerrilla Juice 5-1-5 is a liquid organic growth and flowering accelerator that stimulates a healthy soil and optimal growing conditions.

BIOTABS

Guerrilla Box



Slow release organic fertiliser tablets, solution AND beneficial bacteria. Contains 20 Guerrilla Tabs & 500ml of Guerrilla Juice.

For prices and latest RRP's visit
www.easy-grow.co.uk

BIOTABS

Mycotrex



100g

500g



Mycorrhiza are beneficial soil fungi that enter into symbiosis with the plants. They increase the effective reach of the roots, but are actually functioning like roots.

BIOTABS

Silicium Flash



2.5Ltr

9Ltr



100% Organic plant feed that contains a quick acting dose of Silicon, Nitrogen, Phosphorus and Potassium that are rapidly absorbed by your plants.

BIOTABS

Orgatrex



1Ltr

5Ltr



BioTabs Orgatrex is an organic growth and flowering booster. Perfect for use with soil or coco and is 100% certified organic. Suitable for indoor or outdoor use.

BIOTABS

Startrex



1.5Kg

5Kg



Startrex is a soil conditioner and organic fertiliser with a high probiotic bacteria content. Designed to bring soil back to life, contains high probiotic bacteria, silicon & fulvic acid.

BIOTABS

PK Booster Compost Tea



750ml

2.5Ltr



A mixture of extremely concentrated organic compost which has a direct impact on the health of plants and their yield.

BIOTABS

Starter Pack



The BioTabs Starter Pack contains nutrients and soil improvers that you are going to need for a thriving, successful and 100% organic growth. **Includes: BioTabs, Startrex, Orgatrex, Mycotrex & Bactrex (5-10 plants).**

For prices and latest RRP's visit
www.easy-grow.co.uk

QUALITY FOCUSED. RESULTS BASED.



CLEAN - CONSCIOUS - CANADIAN

GreenPlanet

AVAILABLE EXCLUSIVELY AT EASY GROW

GreenPlanet

Green Planet Nutrients include many types of fertilisers in the line up, including dry and liquid fertilisers. These fertilisers include base nutrients, additive nutrients and maintenance products. Whether it's to provide a base level of nutrition, increase resin and aroma in flowers, and maintain your growing environment, each fertiliser is designed to optimise performance.

Green Planet Nutrients has a product for you, no matter your style. They're passionate about formulating the best, cleanest, and most highly bio-available nutrients on the market. High quality nutes = happy and healthy plants.

Whatever style of growing you decide, Green Planet can help you achieve the best results possible. Their icon system aims to aid you in choosing the right product to suit your individual growing needs. If you need to figure out which feed program is right for you, take a look at Green Planets predetermined feed programs.



FIND OUT MORE

Scan here to find out more about the Green Planet product range.



GREEN PLANET POWDER NUTRIENTS

Bud Booster



500g
1Kg
2.5Kg
5Kg
10Kg



**BEST
SELLER**



Bud Boosters high levels of phosphorus helps to promote blooming and assists in plants metabolism during the middle of the flowering stage.

This extremely cost effective product will increase the size and density of flowers by using powdered phosphorous and potassium.

GREEN PLANET POWDER NUTRIENTS

Dense Bud Compactor



500g
1Kg
2.5Kg
5Kg



**BEST
SELLER**

Dense provides the potassium which is needed in relatively large amounts to support the various plant functions critical for huge yields.

Potassium is vital in the activation of more than 80 plant enzymes that regulate various functions.

GREEN PLANET POWDER NUTRIENTS

Karbo Boost



600g
1Kg
2.3Kg
11.34Kg



Karbo Boost is a powdered supplement that delivers an added source of carbohydrates for microbial life during the flowering stage.



BUD BOOSTER

THE ORIGINAL BLOOM ADDITIVE
TO ACHIEVE LARGER, HEAVIER CROPS.

GreenPlanet



ICON GUIDE

Green Planet have a huge range of products in their line up, including base nutrients, additives, maintenance products, products for use in different growing stages and different garden environments.

Because of this, Green Planet have developed a simple icon guide to make it easier for growers to figure out which products they should use and how to use them.

FERTILISER TYPE



Liquid Fertiliser

This icon symbolises liquid fertiliser. If you're all about indoor growing and hydroponics, liquid fertilisers are probably your go-to type of plant nutrient.



Dry Fertiliser

This icon symbolises dry fertiliser. Dry plant fertilisers consist of small beads or pellets that release nutrients into the soil. They also allow you to feed less often.

GROWTH STAGE



Vegetative Stage

This icon indicates this product is formulated for use during the vegetative stage of growth.



Flowering Stage

This icon indicates this product is formulated for the flowering stage of growth, including fruiting.

NUTRIENT TYPE



Base Nutrients

This icon symbolises base nutrient. Base nutrients are the most essential type of nutrient. Plants have three basic elements they need to survive: Nitrogen (N), Phosphorus (P) and Potassium (K).



Maintenance Product

This icon symbolises a maintenance product. Maintenance products maintain a certain aspect of your garden, and help you to help your plants.



Additive Nutrient

This icon symbolises an additive nutrient. Additive nutrients are performance boosters. They can enhance aroma, resin production, and even the size of blooms, when included in your feed program.

WHERE TO USE



Hydro

Products with this icon can be used in hydroponic systems. Including drip systems, nutrient film technique, water culture/deep water culture, aeronics, and wick systems.



Coco

Products with this icon are great for use in coco mediums. Coco mediums are any type of medium that is derived from coconut fibres.



Soiless

Products with this icon can be used in soilless mediums. Including perlite, peat moss, sand, gravel, pebbles, rock wool, vermiculite, rice hulls, sawdust, straw, etc.



Continuous Liquid Feed

Products with this icon are suitable for continuous liquid feed (CLF) programs. CLF programs provide plants a constant feed of nutrients.

HOW TO USE



Products with this icon can be used outdoors.



Products with this icon can be used in hydroponic systems.



Products with this icon can be used in open systems or "drain to waste" systems.



Products with this icon can be used in closed systems or "recirculating" systems.



Products with this icon can be used in soil and soilless growing medium and mixes.



Products with this icon can be used as a foliar application.



GREEN PLANET NUTRIENTS

Medi One 1 Part Kit

Green Planet's all-natural 1 part base nutrient, Medi One, is now available in a convenient and ready to use nutrient kit. This kit includes everything you need to grow from early veg until the last weeks of flower with easy-to-mix 500ml bottles.

This brand new kit also comes with some of Green Planet's top additives to help your plant reach its full potential.

This Kit Includes

500ml Medi One	500ml Liquid Weight
500ml Ocean Magic	500ml Rezin
500ml Massive Bloom	



GREEN PLANET NUTRIENTS

Dual Fuel 2 Part Kit

Green Planet's simple and effective 2-part nutrient system Dual Fuel is now available in a convenient and ready to use nutrient kit. This brand new kit also comes with some of Green Planet's top additives to help your plants reach their full potential.

This kit includes everything you need to grow from early veg until the last weeks of flower.

This Kit Includes

500ml Dual Fuel 1&2	500ml Liquid Weight
500ml Vitathrive	500ml Rezin
500ml Massive Bloom	

GP3 GROW, BLOOM & MICRO



GP3 Grow

GP3 Grow is the component of the GP3 nutrient system that provides your plants with the optimal nutrients they require in the vegetative stage of growth.

Available in 1Ltr, 4Ltr, 10Ltr & 23Ltr

GP3 Bloom

GP3 Bloom is the component of the GP3 nutrient system that provides your plants with the right nutrients they need in the flowering stage of growth.

Available in 1Ltr, 4Ltr, 10Ltr & 23Ltr

GP3 Micro

GP3 Micro is the component of the GP3 nutrient system that provides your plants with the essential and supplemental nutrients they need in the grow and bloom stages of growth.

Available in 1Ltr, 4Ltr, 10Ltr & 23Ltr



GREEN PLANET NUTRIENTS

GP3 3 Part Kit

Green Planet's unrivalled 3-part nutrient system GP3 is now available in a convenient and ready to use nutrient kit.

This brand new kit also comes with some of Green Planet's top additives to help your plants reach their full potential. This kit includes everything you need to grow from early veg until the last weeks of flower.

This Kit Includes

500ml GP3 Grow, Bloom & Micro	500ml Liquid Weight
500ml Vitathrive	500ml Rezin
500ml Massive Bloom	



GREEN PLANET NUTRIENTS

GP Hydro Fuel 4 Part Kit

Green Planet's easy to use 4-part base nutrient Hydro Fuel is now available in a convenient and ready to use nutrient kit. This brand new kit also comes with some of Green Planet's top additives to help your plants reach their full potential.

This kit includes everything you need to grow from early veg until the last weeks of flower.

This Kit Includes

500ml Hydro Fuel Grow A+B	500ml Massive Bloom
500ml Hydro Fuel Bloom A+B	500ml Liquid Weight
500ml Vitathrive	500ml Rezin



Green Planet have teamed up with AutoPot to create feeding programmes designed specifically to use in conjunction with AutoPot gravity fed systems. Designed for new and experienced growers alike.

GREEN PLANET NUTRIENTS X AUTOPOT

GP AutoPot 2 Part Kit



The Green Planet 2-part Dual Fuel Kit for AutoPot Systems is a convenient and ready to use kit for use in AutoPot Watering Systems.

This Kit Includes

500ml Dual Fuel 1&2	500ml Rezin
500ml PK Spike	500ml Vitathrive

GREEN PLANET NUTRIENTS X AUTOPOT

GP AutoPot 3 Part Kit



The Green Planet GP3 Kit for AutoPot Systems is a convenient and ready to use kit for use in AutoPot Watering Systems.

This Kit Includes

500ml GP3 Grow, Bloom & Micro	500ml Rezin
500ml PK Spike	500ml Vitathrive

For prices and latest RRP's visit
www.easy-grow.co.uk

GREEN PLANET NUTRIENTS

Dual Fuel 1 & 2



1Ltr
4Ltr
10Ltr
23Ltr



0-3-6
5-0-1

Green Planet Nutrient's first true stand-alone, 2-part nutrient system. Dual Fuel is the simplest and most effective 2-part nutrient system on the market.

GREEN PLANET NUTRIENTS

GPF Uptake



1Ltr
4Ltr
10Ltr



0-1-1

GPF Uptake is a water-soluble formula of low molecular weight humic acid that benefits the plant during the entire growth cycle.

GREEN PLANET NUTRIENTS

GPH Uptake



1Ltr
4Ltr
10Ltr



0-0-1

GPH Uptake is a soluble formula of humic acid that aids the plant with nutrient uptake throughout its entire life cycle.

GREEN PLANET NUTRIENTS

Hydro Fuel Grow A+B



1Ltr
4Ltr
10Ltr
23Ltr



3-0-3
0-3-0

Hydro Fuel Grow is a 2-part nutrient system containing all primary, secondary and essential micro nutrients necessary to encourage robust vegetative growth.

GREEN PLANET NUTRIENTS

Hydro Fuel Bloom A+B



1Ltr
4Ltr
10Ltr
23Ltr



4-0-3
0-3-4

Hydro Fuel Bloom is a 2-part nutrient system containing all primary, secondary and essential micro nutrients necessary to encourage robust vegetative growth.



EASYGROW

TOPTIPS!

GreenPlanet ICON GUIDE

Green Planet Nutrients includes many types of fertilisers in our lineup, including dry and liquid fertilisers. These fertilisers include base nutrients, additive nutrients and maintenance products, use the guide on page 45 to understand all the icons within the Green Planet Nutrients range.



GREEN PLANET NUTRIENTS

Liquid Weight



1Ltr
4Ltr
10Ltr
23Ltr



Liquid Weight is a supplement blend of simple and complex carbohydrates that support the plant and beneficial microbial life in the root zone. This leads to an increase in the absorption of essential nutrients that help develop impressive aromatic flowers and fruits.

GREEN PLANET NUTRIENTS

Massive Bloom



1Ltr 12
4Ltr 4
10Ltr 2
23Ltr 1



**BEST
SELLER**



**FLOWER
BOOSTER**

Massive is a comprehensive bloom additive that contains a full array of the micro elements plants require to produce large, healthy flowers. Increases flower size and taste, provides faster cell division and leads to healthier, larger and more colourful crops.

GREEN PLANET NUTRIENTS

Ocean Magic



1Ltr
4Ltr



Ocean Magic is a natural kelp additive that is used in the vegetative stage to benefit the growth and vigour of your plants. The wealth of ingredients found in Ocean Magic supports a number of functional properties such as rooting, reduction of environmental and plant stress, as well as increasing the overall vitality of your plants.

GREEN PLANET NUTRIENTS

PK Spike



500ml
1Ltr



PK Spike is derived from several highly soluble sources of phosphorus (P) and potassium (K) to deliver high amounts of PK to flowering plants. This product is designed to encourage budding, help facilitate bulking, and ripening of flowering plants.

GREEN PLANET NUTRIENTS

Plant Guard



1Ltr
4Ltr
10Ltr
23Ltr



Plant Guard is our potassium silicate supplement used in the vegetative and flowering stage of growth. Silicates increases the rigidity of your plants cell walls to support a heavier harvest and increase resistance to environmental stress.

GREEN PLANET NUTRIENTS

Pro Cal



1Ltr
4Ltr
10Ltr
23Ltr



Pro Cal is an excellent supplemental source of calcium, magnesium and iron. Plants engaged in rapid growth can often come up short on these essential elements so supplementation is a great idea.

For prices and latest RRP's visit
www.easy-grow.co.uk

GREEN PLANET NUTRIENTS

Rezin



1Ltr
4Ltr
10Ltr
23Ltr



**BEST
SELLER**

Rezin is our aroma and flavour enhancer that was developed to greatly increase the essential oil and resin production of flowering plants. The result is high quality flowers at time of harvest.

GREEN PLANET NUTRIENTS

Root Builder



1Ltr
4Ltr
10Ltr
23Ltr



Root Builder is formulated with extremely active beneficial organisms that deliver an abundance of benefits to your plant's root zone at all stages of growth.

GREEN PLANET NUTRIENTS

Medi-One



1Ltr
4Ltr
10Ltr
23Ltr



4-3-3

Medi One is Green Planet's one part base nutrient system formulated with readily available macro and microelements for organic use. Expect vigorous vegetative growth and vibrant floral production with only one bottle.

GREEN PLANET NUTRIENTS

Vitathrive



1Ltr
4Ltr
10Ltr
23Ltr



0-0-1

Vitathrive propagation solution is our comprehensive blend of vitamins and minerals formulated for the vegetative stage of plant growth. It is designed to reinforce plant health and support essential plant functions.

GREEN PLANET NUTRIENTS

Zyme Caps



Zyme is a comprehensive blend of enzymes and biocatalysts in a dry encapsulated formulation that can be applied at any stage of plant growth. It will degrade and convert dead plant matter into readily available nutrients that keep the plant strong and robust.



10 caps
25 caps
100 caps
250 caps

GreenPlanet FREQUENTLY ASKED QUESTIONS

Are all Green Planet Nutrients organic or mineral based?

Green Planet products are mineral-based and organic like Medi One or Ocean Magic. Medi One is OMRI registered.

What is the shelf life of Green Planet Products?

2-3 years when stored in a cool, dark space. Shelf life will vary between products.

What should my PH be?

Keep your pH levels between 5.8-6.5 for optimal nutrient uptake.

What is the difference between your feed programs?

Medi One is a natural based 1 part, Dual Fuel is a synthetic 2 part, GP3 is a synthetic 3 part, and Hydro Fuel is a synthetic 4 part. This allows for more or less control over which nutrients you feed to your plant. The 1-2 part lines are uncomplicated and are easy to use, while the 3-4 allows for more tinkering, suitable for serious growers or hobbyists.

How do I use Green Planet Nutrients?

Measure out and pour the concentrated nutrients into the water reservoir. Do not mix concentrated nutrients together. Add them to the water one at a time and rinse the reservoir between feeding.

What grow medium should I use with Green Planet Nutrients?

The majority of our nutrients will work in any grow medium. Refer to the handy icons on each of our bottles to see which mediums the nutrient is recommended for.

How long will Green Planet Nutrients last in a reservoir?

It will depend on the conditions of your reservoir and which nutrients you are using. We recommend changing your nutrient solution every 1-2 weeks.

Which Green Planet products can I use for a flush?

Using Rezin during flush ensures a clean, aromatic, and flavourful crop.

Do Green Planet products work outdoors as well as indoors?

Yes. All nutrient lines are interchangeable. However, some are more suited to outdoors like our Backcountry Blend line. Remember to refer to the icons to see which medium it suits best!

When do I start feeding my plants, and how often?

When the first set of true leaves emerge (the second set, post-germination). Refer to the feed charts for help with feeding schedules.

What do the icons on the Green Planet products mean?

Each icon indicates whether the nutrient is a base or an additive, which stage of growth to use it at, and which medium to use it with.

What do the 3 numbers on Green Planet products mean?

The 3 numbers are N-P-K values. N-P-K stands for nitrogen, phosphorus and potassium. These are the macronutrients that are key for healthy plant growth.

Can I use Green Planet Nutrients as a Foliar Spray?

Some are suitable for foliar feeding, such as Ocean Magic or Medi One. Look for low NPK values or more natural-based nutrients so that you don't burn the foliage.

How to Boost Flower Production

We've compiled a list of all our products that will help you boost the flower production during your grow. While all elements are important during plant and flower development there are a few key elements that will really send your flower production in to overdrive.

The most important element for flower production is Phosphorus. Phosphorus plays a huge role in the growth of new tissue and cell division in your plants. One of the biggest benefits of the use of Phosphorus in your plants is proper development of the roots and helping your plant reach maturity at the correct time. There are several other benefits like giving your plants better resistance to diseases, stimulating root development and helping the plant photosynthesize properly.

Another element that is important for flower production is Potassium, which is responsible for the movement of water, nutrients and carbohydrates within the plant tissues. Potassium also helps a plant during the fruiting or flowering stages.

While Phosphorus is the element which most growers would associate with flower growth and production, a proper grow schedule is vital in helping your plants reach their full potential.

Please note: We have not created this list based on any ranking system. All have their place in respective feeding programs.



Look out for this icon throughout our catalogue to see our Flower Booster products!



1. Green Planet's Bud Booster

Bud Booster is an original bloom additive from Green Planet which, because of its high level of phosphorus, helps promote blooming and assists in the plants metabolism during the middle of the flowering stage. Bud Booster simply put is a flower enhancer generally used by entry level gardeners to achieve a larger heavier crop.

This extremely cost effective product will increase the size and density of flowers using powdered phosphorous and potassium. The potassium helps improve the quality of your flowers/fruits and helps with the plants starch production.

2. Athena Nutrients PK (Blended)

Athena PK is a balanced bloom boosting complement to our Bloom fertilisers. This clean liquid booster is designed to supplement during the mid- to late-flowering phase. Athena PK is a low Nitrogen booster that provides additional Phosphorus and Potassium that high-yielding plants require for maximal production.

Many PK boosters add far too much of these elements and create a cascade of problems, such as reducing Calcium and Magnesium availability. Balanced elemental bioavailability is essential in the flowering phase to boost essential oil and terpene production.

3. Remo Nutrients AstroFlower

AstroFlower is a unique phosphorus and potassium booster that helps increase yield. It contains both humic & fulvic acid which are beneficial for their chelation properties that improve mineral uptake. Natural amino acids that increase flavour and taste.

AstroFlower is a fully loaded PK bloom enhancer. This unique formula promotes flower development to increase yields in a huge way. This precise blend of fossilised organics target the areas of your plant that control bud development, assists with the production of essential oils and aromatics, and increases potency.

4. BioTabs PK 5-8

Our fourth choice is from BioTabs. PK 5-8 is an organic liquid fertiliser NPK: 2-5-8 + seaweed, vitamins, auxins and other phytohormones. The mighty Bio PK 5-8 Top-Booster from BioTabs yields large & fragrant flowers.

5. BioNova X-Cel

Bionova X-cel is an excellent stimulator to develop XL flowers, which can be applied to all sorts of flowers, fruits, vegetables and herbs. Bionova X-cel significantly increases yield quantity and yield quality of all tested crops!

It contains the following main ingredients: Various vitamins, natural growing and flowering stimulators, amino acids, bacteria's, trace elements, enzymes, kelp and humic acid.

6. RAW Soluble Phosphorus

RAW Phosphorus contains 61% pure water Soluble Phosphate (P). This product also contains a small amount of Ammonium Nitrogen (9%) which plants can utilize during bloom. Phosphorus is particularly beneficial during the early rooting stage but also provides energy during fruit and flower production. RAW Phosphorus is ideal for boosting Phosphorus (P) levels, treating deficiencies and creating optimal recipe solutions. **Works in conjunction with all nutrient and feeding programs.**

7. Green Planet's Massive Bloom

Massive Bloom is a high performance organically derived flowering cycle nutrient, enhanced with all the necessary micro elements to increase flower size, taste, cell division, health, colour and yield.

Massive Bloom Formulation incorporates naturally occurring gibberellic hormones designed to increase internodal spacing allowing more room for the flower to mature and swell to their full potential. Massive Bloom Formulation couples the naturally occurring gibberellic hormones with the scientifically proven plant steroid triacontanol that increases the rate of photosynthesis and CO₂ utilisation.

8. Exhale CO₂ Bags

When adding CO₂ to your grow room, the flowering stage is the most important. Adding CO₂ to your grow room, especially in the first 2-3 weeks of flowering, can kick start flower production and boost flower size significantly. Use Exhale CO₂ bags to naturally provide your plants the extra CO₂ they can thrive on. The power lies in the mycelial mass inside the vented cultivator. This mycelial mass cultivates carbon dioxide and the one-way breather patch releases CO₂ continually for up to 6 months.



SIMPLE. RELIABLE. INNOVATIVE.



BIONOVA
PREMIUM FERTILIZERS



BioNova has been known as a manufacturer of premium fertilisers for all growing and flowering plants since the 1990's. Years of studies and research, combined with practical experience and the deep insights that are gained as a result, have led to unique high-end products. Quality, purity, environmental-friendliness, ease-of-use, high yields and superior end-results are the distinguishing characteristics of these products.



FIND OUT MORE

Scan here to find out more about the BioNova product range.

BIONOVA NUTRIENTS

Coco-Brick for 10L Substrate



6 pack

**BEST
SELLER**



Bionova Cocobrick is an excellent natural 100% coco substrate. This brick consists of six smaller bricks which result in 10 litres of ready-to-use coconut substrate after adding 3.5-4 litres of water to it.

BIONOVA NUTRIENTS

Aero Supermix



1Ltr

5Ltr



Aero SuperMix is a one component bio-mineral fertiliser especially developed for systems that do not make use of any substrates.

BIONOVA NUTRIENTS

BN-Zym



250ml

1Ltr

5Ltr



BN-Zym is a natural bio-catalyst (process accelerator), medium builder and medium improver based on specific enzymes.

BIONOVA NUTRIENTS

Coco-Forte A+B Concentrate



1Ltr

5Ltr



0-6-12
8-0-0

Coco Forte A/B fertiliser is the most simple solution for cultivating on cocofiber slabs. One of the reasons which makes its application so easy is the combination of nutrients for growing and flowering within one product; two bottles is all you need for the entire growth.

BIONOVA NUTRIENTS

Hydro Supermix



1Ltr

5Ltr



7-4-5

Hydro Supermix is a one component bio-mineral fertiliser especially developed for systems with artificial substrates such as rock wool.

BIONOVA NUTRIENTS

NovaFoliar



1Ltr



NovaFoliar is a powerful and highly effective cleaner against pollution of the leaf surface and clogging of the leaf pores (stomata) by waste from pests.

For prices and latest RRP's visit
www.easy-grow.co.uk

BIONOVA NUTRIENTS

PK 13/14



250ml

1Ltr

5Ltr



PK 13-14 is the perfect balanced combination of phosphorus and potassium. Phosphorus activates blooming inside any treated plant and potassium prompts flowering and creates an exuberant flowering.

BIONOVA NUTRIENTS

Roots



250ml

1Ltr



Roots makes for a better and quicker root development, a better food absorption, a higher stress resistance, a more effective use of nutrients and higher yield in all tested crops. Roots is compatible with all fertilisers and care products.

BIONOVA NUTRIENTS

Silution



250ml



Bionova Silution is a plant strengthening liquid stimulator based on stabilised silicic acid and fulvic acid. Silution stimulates nutrient uptake, defense against viruses and infections and results in more dry weight.

BIONOVA NUTRIENTS

Soil Supermix



1Ltr

5Ltr



Soil SuperMix is a one component mineral-organic fertiliser based on Hydro SuperMix and especially adapted to systems with soil. Nutrients for growing and flowering are combined within one product which makes cultivating very easy.

BIONOVA NUTRIENTS

TML – The Missing Link



250ml

1Ltr

5Ltr



The Missing Link protects plants from damaging external influences, it stimulates the plant's natural defence system and significantly increases the yield.

BIONOVA NUTRIENTS

Veganics Grow/Bloom



1Ltr

5Ltr



Veganics Grow/Bloom is a 100% organic liquid nutrient and is particularly recommended for organic farming. Veganics Grow is formulated to be used during the entire growing season. Veganics Bloom is formulated to be used during the budding or flowering stage.

BIONOVA VITASOL

THE NATURAL CANDY



Containing natural sugars, Calcium, Magnesium, Copper, Lime, Potassium, vitamins and a great number of vegan trace elements.

BIONOVA NUTRIENTS

Vitasol



1Ltr
5Ltr
20Ltr



3-0-6

Vitasol is a liquid organic soil-improver based on potassium (6%). Its organic origin facilitates the absorption of Vitasol by the crop. Furthermore it is extremely suitable as a converter of available nutrients, especially in periods of high production and rapid growth or periods of stagnation caused by a nutrient deficiency.

BIONOVA NUTRIENTS

X-Cel



250ml
1Ltr
5Ltr

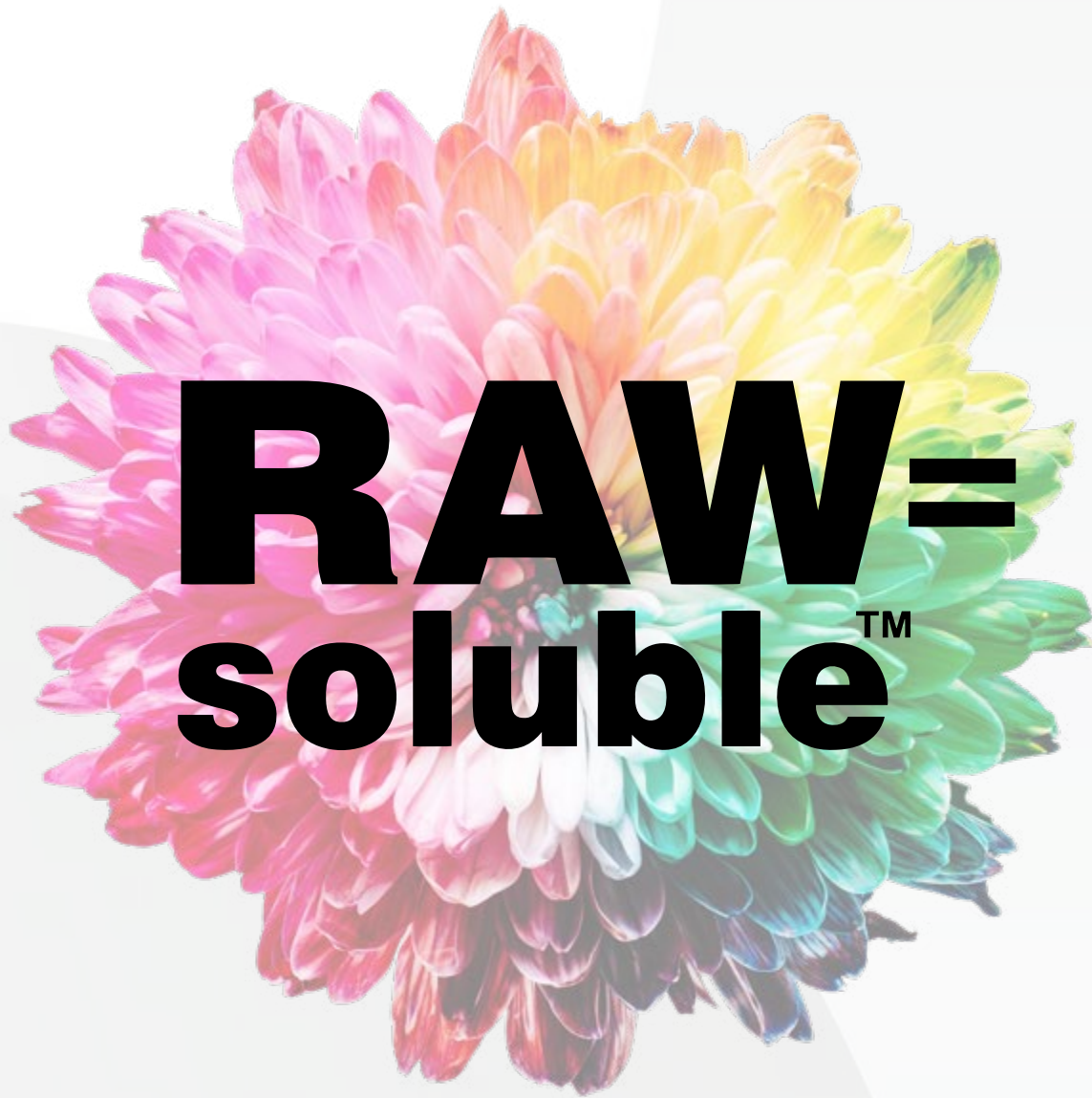


1-0-0

X-cel is a biological growing and flowering stimulator, which can be administered to all sorts of plants and significantly increases the quantity and quality of all tested crops.

For prices and latest RRP's visit
www.easy-grow.co.uk

100% WATER SOLUBLE
NO FILLERS, NO DYES



INDIVIDUAL SUPPLEMENTS, MAXIMUM CONTROL
AVAILABLE ONLY AT EASY GROW

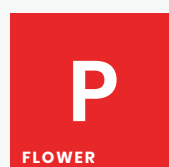


FIND OUT MORE

Scan here to find out more
about the RAW Soluble product
range.

RAW= soluble™

Essential elements and bio-stimulant soluble powders. RAW Soluble is a fully water soluble additive line up, comprising of 12 essential elemental building blocks, to supplement your nutrient feeding program. When these supplements are individualised it allows the gardener maximum control.



Phosphorus

Important cell division and development of new tissue.



Nitrogen

Part of every protein in the plant, so it's required for virtually every process.



Potassium

Boosts flower production & improves resistance to diseases and insects



Silica

Increases growth rate - thicker cell walls also build bigger stems & branches.



Humic Acid

Allows for the creation of micronutrients, increasing their bio-availability.



Kelp

Rich in natural plant growth hormones and beneficial trace elements.



Calcium/Mag

Extra magnesium can be helpful during fruiting and flowering.



B Vitamin

Adding B-vitamins directly to the nutrient solution helps the plant recover from stress.



Yucca

Helps water and nutrients penetrate deeper in to the root zone.



Cane Molasses

Cane molasses is an excellent source of carbon energy (food) for beneficial microbes.



oMina

oMina is a naturally available source of 14% vegan Nitrogen derived from plant protein hydrolysate.



Full Up

As a foliar spray, increases plant's oxygen levels uptake capacity.



Grow

A tested blend of 12 RAW Soluble plant nutrients, essential elements and supplements.



Bloom

100% water soluble powdered all-in-one bloom. Costs less to produce more.



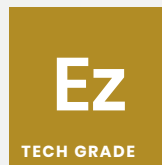
Microbes Grow

RAW Grow Microbes are a specific group of beneficial bacteria and fungi.



Microbes Bloom

RAW Bloom Microbes are a specific group of beneficial bacteria and fungi.



Enzymes

RAW Enzymes are 100% soluble and compatible with all nutrient programs.



Amino Acids

RAW Amino Acids are uncut, tech grade Amino Acids derived from L-glycine and L-glutamic acid.

For prices and latest RRP's visit
www.easy-grow.co.uk

RAW SOLUBLE

RAW Grow



2oz
8oz
2lb
10lb
25lb



7-4-5

RAW Grow is a tested blend of 12 RAW Soluble plant nutrients, essential elements and supplements. An optimal all-in-one base "Grow" horticultural fertiliser.

RAW SOLUBLE

RAW Bloom



2oz
8oz
2lb
10lb
25lb



3-12-12

RAW Bloom is a tested blend of 12 RAW Soluble plant nutrients, essential elements and supplements. An optimal all-in-one base "Bloom" horticultural fertiliser.

RAW SOLUBLE

RAW Amino Acids



2oz
8oz
2lb
10lb
25lb



*BEST
SELLER*

7-0-0

RAW Amino Acids are a tech grade soluble plant supplement that is compatible with all nutrient programs, from hobby to professional, soil to hydroponics.

RAW SOLUBLE

RAW B-Vitamin



2oz
8oz
2lb
10lb
25lb



RAW B-Vitamin contains 1% vitamin B1 which is the highest concentration of water soluble vitamin B1 available to the home gardener. RAW B-Vitamin also contains 9% magnesium and is an optimal magnesium supplement.

RAW SOLUBLE

RAW Calcium/Mag



2oz
8oz
2lb
10lb
25lb



9-0-0

RAW Calcium/Mag has optimised the ratio of each element in a water soluble formulation of calcium nitrate and magnesium sulphate so that it doesn't leave the media salty. This product is a stand alone Calcium / mag supplement.

RAW SOLUBLE

RAW Cane Molasses



2oz
8oz
2lb
10lb
25lb



*BEST
SELLER*

0-0-1

RAW Cane Molasses is a highly concentrated, water soluble micronised molasses that gives all the benefits of liquid Molasses without all the mess. The smallest 2oz packet is equivalent to 3.78 Litres of liquid molasses.

For prices and latest RRP's visit
www.easy-grow.co.uk

RAW SOLUBLE

RAW Enzymes



2oz
8oz
2lb
10lb
25lb



RAW Enzymes are uncut, tech grade enzymes. Active ingredients are cellulase, xylanase, and beta-glucanase. No fillers, no dyes.

RAW SOLUBLE

RAW Full Up



2oz
8oz
2lb
10lb
25lb



Use RAW Full Up in conjunction with all nutrients and supplements. It is a beneficial supplement to all feeding schedules. It is also ideal for adding to foliar sprays and for creating optimal recipe solutions.

RAW SOLUBLE

RAW Humic Acid



2oz
8oz
2lb
10lb
25lb

**BEST
SELLER**



0-0-4

RAW Humic Acid contains 59% humic acids derived from leonardite which is the most concentrated, water soluble humic acid product on the market today. In nature Humic Acid has a buffering effect on soils, it can raise the pH of acidic soils and lower the pH of alkaline soils.

RAW SOLUBLE

RAW Kelp



2oz
8oz
2lb
10lb
25lb



0-0-1

RAW Kelp is 99% kelp extract from seaweed (ascophyllum nodosum). This product is fully water soluble. RAW Kelp is a beneficial supplement to all feeding schedules. It is also ideal for adding to foliar sprays and for creating optimal recipe solutions.

RAW SOLUBLE

RAW Mother A/B



2oz



15-0-0
6-12-21

RAW Mother A/B is a two-part, commercial base nutrient formulated specifically for mother plants. Providing an ideal foundation for vigorous, productive mother plants.

RAW SOLUBLE

RAW Flower A/B



2oz



14-0-14
5-15-24

RAW Flower A/B is a two-part, commercial base nutrient formulated for the bloom/flowering phase. An ideal foundation for commercial & custom nutrient programs.

For prices and latest RRP's visit
www.easy-grow.co.uk

RAW SOLUBLE

RAW Nitrogen



2oz
8oz
2lb
10lb
25lb



20-0-0

RAW Nitrogen contains 20% ammonium nitrogen (N). It does not contain nitrates or urea which enables it to be applied at all stages of growth and bloom. Plants take up two forms of nitrogen: nitrate (N) and ammonium nitrogen only.

RAW SOLUBLE

RAW oMina



2oz
8oz
2lb
10lb
25lb



14-0-0

RAW omina (essential) is a naturally available source of 14% vegan nitrogen derived from plant protein hydrolysate. Producing a dramatic effect on calcium uptake by the roots. It is completely water soluble and will not clog pumps or irrigation lines.

RAW SOLUBLE

RAW Phosphorus



2oz
8oz
2lb
10lb
25lb



9-61-0

RAW Phosphorus contains 61% pure water soluble phosphate (P). It also contains a small amount of ammonium nitrogen (9%) which plants can utilise during bloom. Phosphorus is particularly beneficial during the early rooting stage but also provides energy during fruit and flower production.

RAW SOLUBLE

RAW Potassium



2oz
8oz
2lb
10lb
25lb



0-0-50

RAW Potassium contains 50% water soluble potash derived from potassium sulfate. RAW Potassium is a great product to battle against potassium deficiencies.

RAW SOLUBLE

RAW Silica



2oz
8oz
2lb
10lb
25lb



RAW Silica contains 45% silicon dioxide which is the highest concentration of silicon dioxide available to the home gardener. RAW Silica is flowable and suspendable in water and naturally available to the plant.

RAW SOLUBLE

RAW Yucca



2oz
8oz
10lb
25lb



BEST
SELLER

RAW Yucca is made from 100% natural yucca extract from the plant Yucca Schidigera. It can be used as wetting agent for nutrient solutions and foliar sprays and is great for flushing excess salts from the root zone.

For prices and latest RRP's visit
www.easy-grow.co.uk

RAW SOLUBLE

RAW Microbes Grow



2oz

8oz

2lb

10lb

25lb



RAW Grow Microbes are a specific group of beneficial bacteria and fungi formulated specially for the grow / vegetative stage of plants.

RAW SOLUBLE

RAW Microbes Bloom



2oz

8oz

2lb

10lb

25lb



RAW Bloom Microbes are a specific group of beneficial bacteria and fungi formulated specially for the flower / bloom stage of plants.

RAW SOLUBLE

RAW Microbes Azos Blend



2oz



Nitrogen fixing bacteria that increase yields by creating more plant available nitrogen. Also contains phosphorus solubilising bacteria that enhances the flowering process, promotes root growth, and improves root architecture by creating more phosphorus availability.

RAW=
soluble™



For prices and latest RRP visit
www.eas-grow.co.uk

RAW^{soluble} PLANT RECIPES

RAW Soluble nutrients offer the grower the maximum control over their grow. As a result, if you notice anything wrong in the process, there will be something you can do about it. We've compiled a list of recipes using RAW Soluble products to help you overcome any problems that may arise during your plants growth.

Nitrogen Deficiency



How to tell if you have a Nitrogen deficiency.

Your plant leaves will start to turn a general overall pale yellow colour. The pale yellowing will continue to increase until deficiency is corrected.

The Recipe

Add 1/4 tsp RAW Nitrogen per 3.8Ltr of solution. Apply solution every other time when watering the plants with the nitrogen deficiency.

And/or add 1/4 tsp of RAW ominA per 3.8Ltr of spray. Apply to bottom side of the plants leaves.

Magnesium Deficiency



How to tell if you have a Magnesium deficiency.

The bottom leaves of your plant will start to yellow. The yellowing will be in the leaf tissue and the leaf veins will remain green.

The Recipe

Add 1/2 tsp RAW B-Vitamin (9% magnesium) per 3.8Ltr of solution. Apply every other watering to plants with the magnesium deficiency.

Calcium Deficiency



How to tell if you have a calcium deficiency.

Leaf tips and margins begin to wither and die back, and new growth is often deformed.

The Recipe

Add 1/4 tsp RAW Calcium/Mag (15% calcium) plus 1/4 tsp RAW OminA per 3.8Ltr of solution. Apply every other watering to plants with the nitrogen deficiency.

Potassium Deficiency



How to tell if you have a Potassium deficiency.

Leaf margins turn yellow or brown, and dark spots start to appear.

The Recipe

Add 1/8 tsp RAW Potassium per 3.8Ltr of solution. Apply every other watering to plants with deficiency.

Stress/Transplant Recipe



When to use

At the transplant stage or any stage in which your plant may incur some stress.

The Recipe

Add 1/4 tsp RAW B-Vitamin plus 1/8 tsp RAW Kelp per 3.8Ltr of solution.

Root Structure Recipe



When to Use

Use when increased root development is desired.

The Recipe

Add 1/4 tsp RAW Silica, plus 1/8 tsp RAW Kelp, plus 1/4 tsp RAW Humic Acid per 3.8Ltr of solution.

Nutrient Uptake Recipe



When to Use

Use in conjunction with nutrient programs during times of heavy feeding.

The Recipe

Add 1/16 tsp RAW Yucca, plus 1/4 tsp RAW Full Up per 3.8Ltr of solution.

Early Bloom Booster Recipe



When to Use

Use during transition and/or early stages of bloom. (weeks 1 – 2 bloom).

The Recipe

Add 1/8 tsp RAW Phosphorus plus 1/16 tsp RAW Potassium plus 1/4 tsp RAW OminA per 3.8Ltr of solution.

Mid Bloom Booster Recipe



When to Use

Use during mid stages of bloom. (weeks 3 – 5 bloom).

The Recipe

Add 1/8 tsp RAW Phosphorus plus 1/16 tsp RAW Potassium plus 1/4 tsp RAW Full Up per 3.8Ltr of solution.

Late Bloom Booster Recipe



When to Use

Use during late stages of bloom. (weeks 6 – 7 bloom).

The Recipe

Add 1/8 tsp RAW Phosphorus plus 1/8 tsp RAW Potassium plus 1/4 tsp RAW B-Vitamin per 3.8Ltr of solution.

Flush Solution



When to Use

Use during final weeks of bloom, prior to harvest. (weeks 8 – 9 bloom).

The Recipe

Add 1/4 tsp RAW Cane Molasses plus 1/16 tsp RAW Yucca per 3.8Ltr of solution.

Why are my plants leaves turning yellow?

RAW=
soluble™

I spent several years managing a hydroponics store in Michigan, and I can't tell you how many times a customer would come in and say, "My plant's leaves are turning yellow. What's wrong?" I'd usually stop and take a deep breath, because I knew I was going to have to put my detective's hat on!

Yellowing leaves can be caused by just about anything that's a little out of whack in a grow room: low light, over watering, nutrient deficiencies, nutrient toxicities, root diseases, viruses... or it could just be a symptom of the plant's natural aging process. Who knows? But when it came down to nutrient deficiencies, I could usually narrow it down to one of three things: magnesium deficiency, nitrogen deficiency or iron deficiency.

So my first question would be, "Where did the yellowing leaves start to appear, on the bottom of the plant or the top of the plant?" If it was the top leaves, my prime suspect was iron deficiency.

If it was the bottom leaves, my first guess would be magnesium deficiency. And if it was a general yellowing of the plant, it was probably a nitrogen deficiency. I'd ask a few more questions, just to narrow things down a little, such as: "Are you growing in soil or hydroponics? What is your pH? What is your EC? What stage of growth are your plants in? Etc... Eventually, I'd make an educated guess and hope I was on the right track!

1. Nitrogen Deficiency

I saved nitrogen deficiency for last because it is fairly uncommon in hydroponics, unless the EC of the nutrient solution is much too low or if carbohydrate additives are used. Most hydroponic nutrient formulas include nitrogen at luxury levels, so even using half-strength nutrients provides

adequate nitrogen for most plants. In fact, nitrogen toxicities are much more common in hydroponics than nitrogen deficiencies. Too much nitrogen promotes lots of lush, green top growth, but restricts root growth. Nitrogen toxicity can also delay or prevent flowering. So make sure that you properly diagnose nitrogen deficiency before arbitrarily adding extra nitrates!

In hydroponics, avoid using sweet carbohydrate products in the reservoir, especially during the vegetative growth stage. Hydroponic nutrients have a very high nitrate: ammonium ratio... Usually about 90% nitrate to 10% ammonium. If you add carbohydrates to the nutrient solution, the sugars feed microorganisms. But a competitive advantage is given to the microorganisms that also feed on nitrates, converting them to toxic nitrites. In some of my lab experiments using added sugars, the nitrate levels were reduced to zero in just a few days! Even the plants that didn't show yellow leaves still performed poorly compared the plants that weren't given any carbs.

Nitrogen deficiency is much more common in soil. Nitrates are very water soluble, so over watering can easily leach nitrates out of the root zone. Microorganisms in the soil can also compete with the plant for available nitrogen, especially if the soil has too high of a carbon to nitrogen ratio. Since nitrogen is part of the chlorophyll molecule, the leaves will start to turn pale yellow as the nitrogen deficiency gets worse. Like magnesium, nitrogen is a mobile element, so the first signs of nitrogen deficiency will show up in the lower to middle part of the plant. But generally speaking, nitrogen deficiency is more of a general yellowing, while magnesium deficiency is more strongly interveinal.

To know for sure, take a leaf sample test. Easy-to-use tissue sample test kits are available for nitrogen. Reagents will indicate high, adequate or deficient levels of nitrogen.

If there is a true nitrogen deficiency, you can try using a general purpose grow formula to correct the problem. But to be even more precise, specific nitrogen-based fertilisers are also available. Nitrogen fertilisers can be used at the root zone or as foliar feeds. Just make sure that you only use ammonium-based fertilisers on leaves. Nitrate-based foliar sprays may produce carcinogenic compounds, but ammonium-based fertilisers are safe.

Just make sure to carefully follow directions to avoid burning the leaves. Natural alternatives such as amino acids are also effective foliar sprays, but they usually take longer for the plant to respond.

2. Magnesium Deficiency

By far the most common nutrient deficiency in hydroponics is a magnesium deficiency. Magnesium is a mobile element. That means that if a magnesium deficiency starts to develop, the plant can pull the magnesium out of the lower leaves and transport it to the top leaves where it is needed the most. Since magnesium is the central element in chlorophyll, the bottom leaves would develop "interveinal chlorosis". In other words, the veins would remain green, but the tissue between the veins would begin to turn yellow. Plants need plenty of magnesium when their energy requirements are highest.

So during times of rapid vegetative growth or heavy fruit production, sometimes the plants can't keep up with their demand for magnesium. Hence, the yellowing leaves. In that case, adding a little cal-mag to the reservoir, or spraying a little magnesium sulfate on the leaves will green up the plants in a hurry!

But sometimes there is plenty of magnesium in the reservoir, but the plants still show signs of a magnesium deficiency. In that case, too much potassium may be the problem. A potassium toxicity shows up as a magnesium deficiency. That's why I ask what stage of growth the plant is in. If it's in the fruiting and flowering stage AND the grower is adding lots of P/K boost, a magnesium deficiency might develop.

In that case, I'd recommend backing off a little on the extra potassium. Otherwise, you are only treating the symptoms, and you could actually cause more problems by using too many additives. When it comes to plant nutrition, it's all about balance.

If you're growing in hydroponics and you start to see signs of yellowing leaves, don't panic. Check your pH, check your EC and change out the water with fresh nutrients on a regular basis. Most of the time, the plant will fix itself! But get to know your plants. During times of rapid vegetative growth, transition periods between grow and bloom, or during heavy fruiting and flowering, giving your plants a dose of extra magnesium could be very rewarding.



EASYGROW

TOPTIPS!

Use the RAW Recipes guide on Pages 64-65 to effectively treat your plant deficiencies.



3. Iron Deficiency

If yellowing starts to show up in the new growth at the top of the plant, I usually suspect an iron deficiency. Iron is an immobile element. In other words, once it's assimilated by the plant it can't be easily translocated to other parts of the plant. That means that an iron deficiency first shows up in the new growth at the top of the plant. The new leaves start to turn yellow, usually from the stem outward towards the tip of the leaves.

When I suspect an iron deficiency, the first thing I check is the pH. Iron is one of the first elements to become unavailable to the plant once the pH rises above 6.5. Once the pH exceeds 7.5, all of the trace metals become unavailable, including iron, copper, manganese and zinc. So the first step in correcting an iron deficiency is to reduce the pH to somewhere between 5.8 and 6.4. Once the pH is in the correct zone, the iron will become available again and the leaves will start to turn green.

Iron deficiency is particularly prevalent during times of rapid vegetative growth. During the vegetative growth stage plants take up relatively more nitrate-nitrogen (NO_3^-). Nitrates are negatively-charged ions. So when a plant takes up a nitrate ion, it has to get rid of another negatively-charged ion such as a bicarbonate ion.

The more bicarbonate ions leaked by the roots into solution, the higher the pH. So pH tends to go up during periods of strong vegetative growth, sometimes resulting in an iron deficiency. I once tried to grow sweet corn hydroponically, but it was such a heavy nitrate feeder that I had to adjust the pH and EC twice a day! Once the pH rose above 6.5, the leaves would start to develop yellow stripes, but as soon as I lowered the pH the yellow stripes would start to fill in with green again.

To help prevent iron deficiencies during periods of fluctuating pH, the best hydroponic nutrients include iron in a chelated form. Chela means claw, so a chelate attaches to an iron ion like a claw helping to keep it soluble in the hydroponic solution. To know which chelate is used, check the label. The three most common synthetic chelates are EDTA, DTPA and EDDHA. EDTA is the weakest, DTPA is stronger, and EDDHA is the strongest. EDDHA remains stable even at very high pH's, but it is much more expensive than the other forms.

For prices and latest RRP's visit
www.easy-grow.co.uk



REMO
NUTRIENTS

MADE BY GROWERS FOR GROWERS



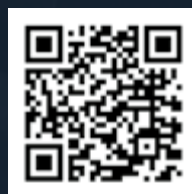
AVAILABLE EXCLUSIVELY AT EASY GROW



EVERYTHING YOUR PLANTS NEED AND NOTHING THEY DON'T

Remo Nutrients was truly spawned from a passion for growing. As "Urban Remo", Remo has helped thousands of people to learn the skills necessary to produce a world class product. His expertise covers all levels of growing and has landed him 34 awards, worldwide.

Remo brings his vast experience to Remo Nutrients, creating products that offer a complete system of the vitamins, minerals, and extracts that your plants need to achieve their maximum growth potential. By using pharmaceutical grade ingredients, our system opens up your garden's growth potential to the maximum degree.



FIND OUT MORE

Scan here to find out more about the REMO Nutrients product range.



REMO NUTRIENTS

GROW, BLOOM & MICRO

Remo's Micro, Grow, and Bloom bring a quality and simplicity to your garden. These products proprietary blend of macro and micronutrients provide your plants with the foundation needed to achieve maximised yield.

REMO Nutrients only use pharmaceutical grade minerals, marine extracts and the finest chelates to ensure consistency and pH balance.



REMO NUTRIENTS

AstroFlower



500ml
1Ltr
5Ltr
10Ltr
20Ltr



1-6-11

AstroFlower has been specifically formulated to complement Remos Micro, Grow and Bloom. This blend of organics target the areas of your plant that control bud development and assists with the production of essential oils and aromatics, and increasing potency.

REMO NUTRIENTS

MagNifiCal



500ml
1Ltr
5Ltr
10Ltr
20Ltr



3-0-0

MagNifiCal is super chelated, resulting in a quicker uptake to your plants. Remos MagNifiCal formula has been specially designed to speed up absorption rates and can start affecting your plants within a couple of hours after use. MagnifiCal can be used as an additive or foliar spray.

REMO NUTRIENTS

Nature's Candy



500ml
1Ltr
5Ltr
10Ltr
20Ltr



0-0-0

Remo Nutrients unique blend of carbohydrates & amino acids is beneficial for all stages of plant development. Helps with feeding beneficial bacteria & fungi in your root zone, while the amino acids help in improving nutrients uptake and micro flora levels.

REMO NUTRIENTS

VeloKelp



500ml

1Ltr

5Ltr

10Ltr

20Ltr



VeloKelp's amazing formula is packed with vitamins and multiple seaweed extracts, specifically designed to support a thriving garden. It can be used during all stages of growth, however VeloKelp is most beneficial during early plant development.

SUPERCHARGEDKIT

The Remo Supercharged Nutrient Kit offers a complete feeding programme to satisfy your plants from start to finish.

This complete kit comprises of base feeds for vegetation and bloom, boosters, enzymes, additives, a handy feeding guide and grow room shades. Available in 500ml or 1Ltr size kits.

This Kit Includes

Micro x 2
Bloom x 2
Grow x 1
AstroFlower x 1
MagNifiCal x 1
Nature's Candy x 1
VeloKelp x 1

FREE
Measuring Cup
REMO Grow Glasses
Feed Chart



JOIN THE
REMO REVOLUTION



MICROBE LIFE HYDROPONICS

Photosynthesis Plus

Enhances plant functions at the foliar level and the root zone in both soil and soil-less substrates. Enhances photosynthesis and biological function by allowing plants to capture and utilise radiant energy more efficiently. Speeds uptake and distribution of essential macro- and micro- nutrients required for all plant metabolic functions and growth. Promotes plant vigour and reduces input costs while increasing yields.



473ml

946ml

3.785Ltr



Rhodospseudomonas palustris – Modulates photosynthesis according to the amount of light available.



Rhodospirillum rubrum – possesses bacteriochlorophylls, which are most efficient at absorbing light at different wavelengths from chlorophyll a found in plants.



FIND OUT MORE

Scan here to find out more about the MicrobeLife product range.



MICROBE LIFE HYDROPONICS

Vegetable & Fruit Yield Enhancer



473ml

946ml



A highly active and balanced blend of microbes and humic substances that combines photosynthetic cultures and essential elements.



MICROBE LIFE HYDROPONICS

Foliar Spray & Root Dip



473ml

946ml



Combines the high concentration of photosynthetic cultures with natural, rare earth humates and essential elements for improved plant biology.

NPK INDUSTRIES

Multiply



60ml

250ml



Multiply works in conjunction with all nutrient & feeding programs to promote vigorous roots and shoots and helps maintain maximum genetic potential.

MICROBE LIFE HYDROPONICS

Organic Photosynthesis Plus



3.785Ltr



Enhances biological function at the foliar and root substrate levels, transporting the sun's energy and speeding carbon to plants at much improved rates!

NPK INDUSTRIES

Stack



60ml

250ml

500ml



Stack works in conjunction with all nutrient and feeding programs to promote early and constant fruit/flower development.



05.

CO₂

ENRICHMENT



HOW TO USE EXHALE CO₂ BAGS

ExHale CO₂ bags come complete and are cultivating carbon dioxide even before you get out of the checkout line.

No need to turn it on or turn it off, simply place it in your grow space and leave it alone to do its job.

A continuous shower of carbon dioxide directly onto your plants is the most efficient way to deliver CO₂. Placing the bag slightly above the level of your plants will ensure they receive the carbon dioxide they need 24 hours a day for up to 6 months. This is a revolution in your indoor carbon dioxide production systems.

CO₂ is continually produced and is released through the micro-porous filter patch on the bag.

130,000 cubic feet 2500-3000ppm enriched CO₂ over 6 months.

Top Tip: Exhale is great source of Nitrogen when its expired, just break up and add to your soil.



CO₂ ENRICHMENT

ExHale CO₂ Bag



The ExHale CO₂ bag cultivates carbon dioxide 24 hours a day with no need to refill bottles or use expensive production units. Maintenance Free: No heat, no electricity, just CO₂.

How They Work: The CO₂ bags work through photosynthesis – photosynthesis is the process by which plant leafs make carbohydrates. Sunlight, carbon dioxide and water are converted into carbohydrates and oxygen by the action of chlorophyll in the chloroplasts of the plant. Plants growing indoors under artificial light often lack enough CO₂ to efficiently photo-synthesise. When plants are able to maximise the process of photosynthesis, the result is larger plants with larger yields.



AREA OF EFFECT

Regular	1.2m ²
XL	1.8m ²

For prices and latest RRP's visit
www.easy-grow.co.uk

The importance of adding CO₂ to your growroom

Indoor gardeners are always looking for new and innovative ways to boost their yields. There is, in fact, a very simple way to maximise your yields and grow strong and healthy plants, and this is by adding CO₂ to your grow room. But what exactly is CO₂, what is the best way to add CO₂ to your grow room, what is the best CO₂ system, where can you find the best CO₂ bags for grow rooms, and how does it benefit your plants?



What is CO₂?

CO₂, or carbon dioxide is what we expel when breathing, and what plants use to initiate photosynthetic functions. Plants actually 'breathe in' CO₂ in the day, but give out CO₂ at night. Levels of CO₂ are measured in PPM (parts per million), and ambient room levels are typically in the region of 300-400ppm. Assuming you have sufficient circulation in your grow room you should be able to achieve the atmospheric standard of 390 PPM. At this level, you should see plant growth similar to what you see in your garden. If the CO₂ levels drop below 200 PPM, your plants will stop growing.

It is understanding this behaviour that can really benefit your grow. If everything is being done correctly and you have a fine tuned system, then CO₂ can be the one big difference in boosting your yields. Adding enhanced CO₂ levels to your grow can significantly boost plant growth without having to change the way you grow.

If you are looking to accelerate the grow cycles of your crops consider adding additional CO₂ to your grow room. Plant growth accelerates as you increase CO₂ levels up to around 1,500 PPM. Growers have observed up to a 100% increase in grow speed at 1,500 PPM.

For prices and latest RRP's visit
www.easy-grow.co.uk

Features of the Exhale CO₂ Bag



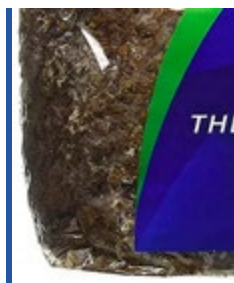
Breather Patch

The exhaust port of the bags. The microporous breather patch allows CO₂ to exit the bag and also keep contaminants out.



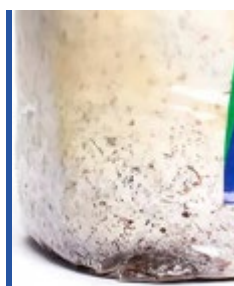
Durable Plastic

ExHale use a hardy plastic to resist puncture and subsequently contamination.



Substrate

ExHale's substrate is a proprietary formula designed to give the CO₂ producing mycelium a food source for the long haul.



Mycelium

Mycelium is a patented strain of non-fruiting, high CO₂ producing fungi that love bringing nature back to indoor gardens.



Why should I add CO₂ into my growroom?

The most important and obvious benefit to your plants is the significant increase in growth that will occur, especially if the potential of your set up has already been maximised.

In addition to this, if levels of CO₂ can be maintained around 1000-1200ppm then you will be able to run your grow room at a higher temperature. This can be incredibly important with growers constantly struggling to keep temperatures down and avoid temperature stress to your plants. The best CO₂ system to add to your grow room should be an organic solution with no maintenance and no running cost.

CO₂ During Vegetation

During the vegetative growing stage adding CO₂ is the biggest way you can increase the rate your plants stretch, allowing your plant to grow with a lot more vegetative grow in a much shorter space of time.

CO₂ During Flowering

When adding CO₂ to your grow room, the flowering stage is the most important. Adding CO₂ to your grow room, especially in the first 2-3 weeks of flowering, can kick start flower production and boost flower size significantly.



How to add CO₂ to your grow room

ExHale CO₂ bags are a natural and easy way of adding CO₂ to your grow room. The ExHale CO₂ bag cultivates carbon dioxide 24 hours a day with no need to refill bottles or use expensive production units.

They work through photosynthesis – photosynthesis is the process by which plant leaves make carbohydrates. Sunlight, carbon dioxide and water are converted into carbohydrates and oxygen by the action of chlorophyll in the chloroplasts of the plant. Plants growing indoors under artificial light often lack enough CO₂ to efficiently photo-synthesise. When plants are able to maximise the process of photosynthesis, the result is larger plants with larger yields.

The power lies in the mycelial mass inside the vented cultivator. This mycelial mass cultivates carbon dioxide and the one-way breather patch releases CO₂ continually for up to 6 months.

Please note, that as CO₂ is heavier than air, the ExHale CO₂ bag should be hung at the top of the grow room to deliver a shower of CO₂ over your plants.



No Rush!



THE **ExHale**
HOMEGROWN CO₂
exhaleco2bags.com



06.

HORTICULTURAL LIGHTING

reliability & performance

PROFESSIONAL HORTICULTURAL LIGHTING SYSTEMS

LUMATEK PROFESSIONAL LIGHTING

Lumatek is one of the largest specialised manufacturers in the horticultural lighting industry. Since 2004 their experienced team have focused on the research, design, development and manufacturing of the most advanced and efficient grow lighting solutions.

By using the best components combined with a certified, expert design and engineering team, Lumatek deliver the safest, most reliable and top performing product in the market.

Independent industry specialists run tests regularly and have been recommending LUMATEK as one of the best horticultural lighting companies for over 10 years.



LUMATEK LED LIGHTING

Zeus Xtreme 1000w LED



Lumatek introduces to growers the most powerful grow light on the market, the Zeus 1000W Xtreme PPFD CO2 LED. Raising the benchmark for horticultural lighting.

Product Dimensions: 1181.2 x 1091 x 105.7mm

LUMATEK LED LIGHTING

Zeus 1000w PRO LED



Meet the brand new Zeus 1000W Pro, innovating with a unique frame giving you a unique coverage on the LED horticultural industry due to its pioneering rectangular shape.

Product Dimensions: 1700 x 1219 x 48.2mm

LUMATEK LED LIGHTING

Zeus Pro 2.9 600w LED



The higher specification Lumatek Zeus Pro 2.9 is a linear multi-light bar fixture producing very high levels of PPF of 1770 $\mu\text{mol/s}$ and a very high efficacy of up to 2.9 $\mu\text{mol/J}$.

Product Dimensions: 1091 x 1182.4 x 51.9mm

LUMATEK LED LIGHTING

Zeus Pro 465w Compact LED



The higher specification Lumatek Zeus 465W Pro Compact LED is a linear multi-light bar fixture producing very high PPF of 1256 $\mu\text{mol/s}$ and a Photon Efficacy of 2.7 $\mu\text{mol/J}$.

Product Dimensions: 998 x 900 x 51.9mm

LUMATEK LED LIGHTING

ATTIS 300w LED



The Lumatek ATS series is a range of full spectrum LED grow lights featuring top bin LUMLED LEDs and dimmable Lumatek drivers.

Product Dimensions: 558.2 x 558.2 x 86.8mm

LUMATEK LED LIGHTING

100W Supplement Light Bar



The Lumatek 100W full-spectrum individual supplemental light LED bar with a 100W remote driver is a flexible and dynamic LED solution to improve your grow results.

For prices and latest RRP's visit
www.easy-grow.co.uk

LUMATEK LED LIGHTING

LED Driver 5m Cable

FOR USE WITH ZEUS 1000w XTREME



LUMATEK LED Driver Remote Use 5m Extension Cables (x3) for Zeus 1000W Xtreme These three 5m long Extension Cables are designed to connect the Lumatek driver and LED fixture.

3 CABLES INCLUDED

LUMATEK LED LIGHTING

630w DE3100K CMH Lamp



CMH Lamp 630W 3100/4200K 240V, a Double-Ended (DE) high frequency pulse-start lamp, has been engineered for use with Lumatek 630W DE CMH electronic ballast.

Lamp Power: 630w

LUMATEK LED LIGHTING

Daisy Chain 5m Control Cable



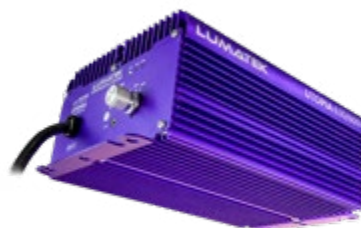
This 5m long Control Link Cable is designed to daisy-chain your LUMATEK Controllable LED Fixtures allowing a stable and precise connection without any interference.

Designed to connect Lumatek Driver & LED Fixture

For prices and latest RRP's visit
www.easy-grow.co.uk

LUMATEK LED LIGHTING

Utopia 600w/630w DE CMH/HPS



The Lumatek Utopia 630/600 DE CMH/HPS controllable ballast powers both high-voltage CMH and HPS grow lamps – which are the most efficient HID light source for horticulture farming.

NO LAMP

LUMATEK LED LIGHTING

Digital Panel Plus (HID+LED)



The LUMATEK Digital Panel PLUS 2.0 (HID+LED) is a dual signal digital lighting controller that offers precise external control of your Lumatek lighting fixtures, drivers and ballasts.

Product Dimensions: 125mm x 80mm x 25mm

LUMATEK LED LIGHTING

LED Driver Remote 5m Cable



These two 5m long Extension Cables are designed to connect the Lumatek driver and LED fixture, in case the driver is used remotely and away from the fixture.

Designed to connect Lumatek Driver & LED Fixture

Stage Zero of Cloning:

The Secrets of Seaweed Extracts.

The art of cloning starts long before the first cutting is ever taken. It starts with nurturing a healthy mother plant. So stage zero of cloning starts with selecting your very best plants as stock plants. The plants should be disease free and selected for the superior qualities that mean the most to you; whether it be colour, flavour, nutritional value or yield. Once the mother plant is selected, it should be provided with a full-spectrum nutrient formula, without excessive nitrate-nitrogen. Organic bio-stimulants are also beneficial, improving the uptake of nutrients and improving the plant's natural resistance to pests and disease.

Seaweed extracts have a two-fold benefit for growing healthy mother plants. When used at the root zone, seaweed stimulates cell division of root cells, resulting in more lateral root growth and root mass. But when seaweed is used as a foliar spray, more lateral bud development is stimulated. More lateral branches mean stockier plants with more candidates for healthy clones!

The secret of seaweed lies in the natural plant growth hormones that it contains. Kelp is especially rich in a class of natural growth hormones known as cytokinins. "Cytokinesis" means "cell division". So cytokinins are the hormones in seaweed that stimulate cell division. When used on the roots, cytokinins stimulate the cell division of root cells. But when sprayed on the leaves, cytokinins break the apical dominance at the growing tip, and stimulate the development of the side branches, instead. Cytokinins also attract plant nutrients into the tissue, improving the content of sugars, amino acids and minerals in the developing tissues. The new growth becomes a virtual storehouse of the nutrients that the clone will need once it is cut from the mother plant.

A final benefit of the natural cytokinins in seaweed is that they help to preserve the "juvenility" of the tissues in which they are found. For example, if you add a drop of water with cytokinins to a leaf, then cut off the leaf and lay it on the table, the entire leaf will start to turn brown... except where the drop of cytokinins were. An island of green will remain!

So to improve the health of clones at stage zero, mist the mother plant with a light application of seaweed extracts about two weeks before you take your first cuttings. For even better results, try adding a little fulvic acid, yucca and B-vitamins to your seaweed spray. Fulvic acid is an intermediate chelator, helping the plant absorb trace elements and amplifying

the beneficial effects of the seaweed. B-vitamins speed up the metabolism of the plant and help prepare it for stress. And the yucca extracts act as a natural wetting agent, helping to spread the foliar spray more evenly over the surface of the leaves for better absorption.

Just don't overdo it! Follow the dosing directions carefully. If you overdo it with seaweed foliar spray, it will over-stimulate cell division and potentially scorch the leaves. Also, don't foliar feed your mother plant with seaweed more than once a week. Once every two weeks is plenty! Properly using seaweed on both the roots and as a foliar feed has a push-pull effect on the mother plant, paving the way for perfect clones. Used at the roots, the mother plant can take up water and nutrients more efficiently, and used as a foliar feed the seaweed will pull the nutrients into the growing tips. It couldn't be better!





06.

PLANT HEALTH

PLANT HEALTH

Bokashi Pro Gro



1.5Kg



This 100% organic soil amendment is a proprietary blend of specialty nutrients, vitamins, minerals, superfood complex and probiotic consortium.

PLANT HEALTH

Seed Excel



60ml

250ml

1Ltr



Use Seed Excel for rapid seed germination, stronger roots, to overcome dormancy and increase plant growth.

PLANT HEALTH

Hygrozyme



500ml

1Ltr

4Ltr

10Ltr



Hygrozyme is a powerful blend of concentrated, beneficial enzymes that work synergistically to ensure that plants will achieve their full potential.

PLANT HEALTH

Temperature & Humidity Meter



The Temperature and Humidity Meter is easy and convenient to operate with a large multi-function LCD screen.

PLANT HEALTH

pH Control Dosing Pump



The pH control dosing pump from prosystemaqua provides fully automated pH control of aqueous solutions in hydroponic and aquaponic systems.



EASYGROW

TOPTIPS!

Our temperature and humidity meter is an essential piece of kit for any growing environment. Keep your humidity levels at the necessary levels helps your plants grow and give them the essential moisture they need and reduces plant stress.

For prices and latest RRP's visit
www.easy-grow.co.uk

PLANT HEALTH

Bugged Out Insect Screen



102mm
127mm
152mm
204mm
252mm
315mm



Prevent insects from contaminating your growing environment with Bugged Out insect ventilation screens.

PLANT HEALTH

Easy Grow Fabric Pots



3.8Ltr
7.6Ltr
26.5Ltr
57Ltr
76Ltr



In an Easy Grow fabric pot the roots air prune; forming multi branched networks of roots & root hairs making strong and efficient root systems.

PLANT HEALTH

Lightite® Pot Tops



5.5" x 5.5"
11.5" x 11.5"



Reduce humidity in your grow area with Pot Tops, designed to benefit the health & growth of your plants. 100% Lightproof to help protect and develop strong root structures. 100 pot tops per pack.

Available Sizes: 5.5 x 5.5" / 11.5 x 11.5"

PLANT HEALTH

Fogger Machine



The Fogger machine is perfect for delivering a powerful, ultra-fine mist of liquid at an effective range of between 3 and 8 metres.

Product Capacity: 5Ltr



PLANT HEALTH

Lockdown Pads

Lockdown Pads, a water resistant, yellow sticky pad that attracts a wide range of insects in your garden. Free of pesticides and having little impact on the environment.

- Pesticide free
- Water resistant
- Easy to monitor trapped insects
- Easy to handle
- Environmentally friendly



6" round
6" square
12" round

For prices and latest RRP's visit
www.easy-grow.co.uk



07.

HORTICULTURAL PROPAGATION

Plug Life

HORTICULTURAL PROPAGATION TRAYS

READY TO USE, NPK INFUSED PROPAGATION TRAYS



HORTICULTURAL PROPAGATION

Plug Life Peatmix

Plug Life Peat Mix is a plug for growing seeds, cuttings and tissue cultures. Extremely easy to use, environmentally friendly and creates fast and robust rooting.

Plug Life Propagation Trays provide nutrients during the first 2 weeks of growth. With a stable pH of 5.7 (± 0.2) and an EC of 0.8 (± 0.2).

Product Specifications

Cells Per Tray: 104
NPK: 2 weeks
pH: 5.7 \pm 0.2
EC: 0.8 \pm 0.2



HORTICULTURAL PROPAGATION

Plug Life Coco

Plug Life Coco is a 100% cocopeat plug for growing seeds, cuttings and tissue cultures. Extremely easy to use, environmentally friendly and creates fast and robust rooting.

Plug Life Propagation Trays provide nutrients during the first 2 weeks of growth. With a stable pH of 5.8 (± 0.2) and an EC of 1 (± 0.2). Additionally it provides natural coconut trichodermas.

Product Specifications

Cells Per Tray: 104
NPK: 2 weeks
pH: 5.8 \pm 0.2
EC: 1 \pm 0.2

Plug Life

HORTICULTURAL PROPAGATION TRAYS

COCOPEAT OR COCO WHATS THE DIFFERENCE?



PEATMIX

80% PEAT 20% COCOPEAT

Size of Tray: 51.5cm x 29.5cm
Depth: 4.3cm
Volume: 28.8cm³
Hole in Base: 1.2cm
Cells Per m²: 705
Central Hole: Yes
Wetting Agent: No
pH: 5.7 ± 0.2
EC: 0.8 ± 0.2
N.P.K: 2 Weeks
Humidity: 86%

Cell Shape



COCO

100% COCOPEAT

Size of Tray: 53cm x 31cm
Depth: 4.5cm
Volume: 20cm³
Hole in Base: 1.5cm
Cells Per m²: 705
Central Hole: Yes
Wetting Agent: No
pH: 5.8 ± 0.2
EC: 1 ± 0.2
N.P.K: 2 Weeks
Humidity: 74%

Cell Shape



BIO TABS SEED PLUGS



HORTICULTURAL PROPAGATION

BioTabs Seed Plugs



Give your plants the best possible initiation with the BioTabs Seedplugs tray consisting of 12 cells and a nutritious bio Startermix solution!

Available Sizes: 12 Cell

For prices and latest RRP's visit
www.easy-grow.co.uk

Propagating your plants.

Propagating your plants is an easy and rewarding way to create more of the plants you love. In this article we have a quick look at what propagation is and the different types of propagation you can use.

First of all, what is Plant Propagation? To put it simply, it's a process you can go through in order to create new plants from your already existing plants. You take something from a plant you already own, like a seed, a basal cutting or a root and repot it to grow on it's own. Propagation can be done several ways, using seeds, roots, stems or the leaves of your plants and can be done to any plant.

Some of the benefits of propagating your plants is that it's very inexpensive, it's a chance for you to learn something new and in the long run it could save you a lot of money (or even make you money selling the plants you propagate) and you need minimal equipment to do it! So let's take a look into the different ways you can propagate your plants.

1. Propagation by saving & sowing seeds indoors

The first way we're having a look at is by growing your new plants by using seeds collected from other plants in order to grow new ones. This is one of the cheapest and most effective ways of propagating your plants. We're only going to cover doing this indoors, as we feel for beginners, this is a lot easier than growing outside as it's got a higher success rate and has more reliable conditions in order to give your seeds the best possible start.

You can propagate seeds very easily. Many gardeners will suggest using a propagation kit like our plug life propagation trays which are a great investment, however, if you are unable to buy propagation trays then you can use alternative containers and compost, just make sure that they allow excess water to drain away properly

You will need peat free multi purpose compost for most seeds, although some seeds will need specialist seed compost to germinate, which is worth checking out if you are unsure. But for the most part multi-purpose compost will be perfectly suitable.

The most difficult part of propagation with seeds is maintaining a suitable temperature, and keeping the soil nice and moist. Some bespoke propagators come with their own plastic lid, but if you are going full diy with this, you can use cling-film or any clear plastic bags and adhesive tape or secure them on your tray or pot with an elastic band. This will help maintain the temperature for the seeds.

2. Propagation by Layering

Certain plants and trees have the ability to root themselves when the plants stems make contact with the soil around them.

The idea behind layering is that the new plants remain partially connected to the original or mother plant while it forms new roots. It can be done manually or in some cases it can occur naturally. The best thing about layering is that it doesn't require any special equipment or controlled environments to succeed and uses less space than many other techniques of propagation.

There are several different ways in which you can propagate by layering depending on what plant you are propagating. To see which you need to go for, please conduct your own research to ensure you proceed with the correct techniques!

3. Propagation by Division

Propagation by division is a great way to propagate your plants, especially your perennial plants (plants that live for more than one year, unlike your annuals). This also helps plant recover because once separated there is less root material to compete for water and nutrients. Dividing your plants can differ slightly if your dividing a perennial plant, or a house plant.

Dividing a perennial: dividing a perennial plant can seem quite a brutal process, but it's simple to do and your plants will love you for it. Once you have got your plant, finding a good divide is important, once you have found your divide,



you can tease apart (carefully) the roots, or chop them using a sharp knife or spade. Once this is done, repot your new plants.

Dividing a house plant: dividing a house plant is a bit more of a delicate process than your perennials. It's a similar process in the beginning, trying to find the gaps where the clump of compost/soil can be separated into smaller sections. Once you have found your gap, you can tease apart the compost or soil with your hands, alternatively using a knife again and make them into smaller sections. From here we recommend cutting away any weak or dead sections of the plant you can see and discarding them.

The same applies to the roots of your plants, if they're looking a little under the weather it's not a bad choice to cut off those roots to allow new, younger roots to form. A decent set of roots should be around 8-10cm.

4. Propagation by Basal Cuttings.

Propagating using Basal Cuttings is perfect for your perennial plants. The term basal means bottom, or foundation. So propagating using basal cuttings is the form of propagation where you cut the plant at its base, where the plant meets the soil. Getting the cutting with any roots is something you can do if you want to dig a little deeper, although it's unnecessary as one of the benefits of Basal propagation is the forming of new roots.

The best time to take basal cuttings is during early spring, this is when the stems of the new plant are solid. Any later in the year and the stems become hollow which isn't what you want. You need to cut the new cutting at the bottom, with clean pruners. Using a clean cutting tool is important to minimise any risk of fungal or bacterial disease.

Plant your cutting(s) in to new clay containers filled with new dampened soil. Place your cuttings outside until rooting begins to occur. There are sources out

there that say planting your cuttings around the edge of your pot or container gives a better chance of success. Always ensure you use clay containers for this method as cuttings need more oxygen, and clay containers are perfect for this. Clay containers are perfect for removing excess moisture from the soil, preventing root rot.

You can increase chances of success by putting over a clear plastic and securing over the top of your container to create a greenhouse-like atmosphere.

Bare in mind that rooting time will depend on what plant you are propagating. Most plants will take a few weeks to start rooting. When you see the roots coming through the drainage holes, it's time to replant your cuttings!

5. Propagation from Root Cuttings.

One of the biggest benefits of propagating using Root cuttings is how simple it is and how little aftercare they require. By taking a few steps, you can propagate large number of plants without any real fancy equipment or previous knowledge of propagation.

Propagation from root cuttings should be done around the November - March time of year, allowing your cuttings to flower in the spring of the following year. Taking your cuttings at this time gives you maximised stored energy within the root, meanwhile minimising any stress being put on to the parent plant.

When choosing your roots, ensure they're around 5mm in diameter, or the thickness of a pencil. These are the younger more vigorous roots that are much more likely to succeed in propagation and create new plants. Cutting your roots should always be done with sharp pruners to make a straight clean cut closest to the parent plant, and on of the other side of the root cutting we suggest making a diagonal cut. This helps maintain the original roots orientation, which is critical to the production of new shoots and roots.

Once you have taken the bits of root you want, cut them into sections around 3-6 inches long, the thinner the root, the longer they should be to ensure there is a enough energy in each cutting to create new roots. When cutting your cuttings, make sure the end furthest away from the plant is cut at a diagonal angle. Once this is done, replant the parent plant.

Now you've got your cuttings prepared, it's important to get them planted and sorted as soon as possible to avoid them drying out. Fill up your desired container/pots with cuttings compost, such as equal parts peat substitute and gritty sand or perlite. Take your cuttings and place them around 2 inches apart so that the horizontal cut surface at the top of the root is just below the surface of the compost and top them with a layer of grit (around 1cm). Water the cuttings lightly and place in an area that is protected from the cold weather or somewhere to provide them with a little extra warmth.

In the following spring, your cuttings should have started to show signs of growth and will have become well rooted in your container. This is now the perfect time to repot the plants in their own pots or containers.



The background of the entire page is a dark, monochromatic photograph of a dense cluster of leaves. The leaves are elongated and pointed, with visible veins, and they are arranged in a way that creates a complex, organic pattern. The lighting is low, giving the leaves a dark, almost black appearance with some subtle highlights that define their shape and texture.

08.

VENTILATION & **AIR CIRCULATION**

VENTILATION & AIR CIRCULATION

Alu+ Flexible Ducting



ALU+ (Aluminium Flexible Duct) is fully flexible, uninsulated, aluminium/polyester laminated ducting. ALU+ ducting is a multiple Aluminium Polyester Laminated ducting.

Multiple Diameters & Lengths available.

VENTILATION & AIR CIRCULATION

Sound Trap Ducting



Eliminate Fan and Airflow noises in your ventilation system with our premium quality sound trap ducting.

Multiple Diameters & Lengths available.

VENTILATION & AIR CIRCULATION

Combi Flexible Ducting



Combi Flexible Duct is a combination of an aluminium/polyester laminated inner-duct with a high tensile steel wire helix, covered with a mechanical resistant PVC layer.

Multiple Diameters & Lengths available.

easybreeze

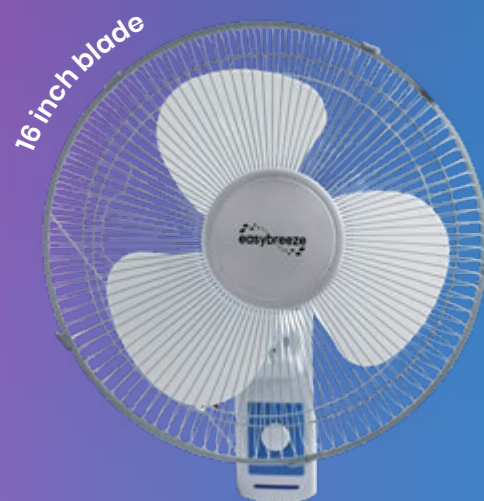


VENTILATION & AIR CIRCULATION

Power Grip Oscillating Fan

The Power Grip Oscillating Clip Fan can be clipped onto any horizontal or vertical pole. Featuring 180° adjustable tilt and 120° oscillation.

Available Sizes: 6 inch blade diameter



VENTILATION & AIR CIRCULATION

Easy Breeze Wall Fan

Our EasyBreeze Oscillating wall fan is the best choice for medium to large growing environments. The 16 inch span of the fan provides any area with a great circulation of air.

Available Sizes: 16 inch

For prices and latest RRP's visit
www.easy-grow.co.uk

VENTILATION & AIR CIRCULATION

AdjustVent Fan Controller



With smooth adjustments to precisely set your fan speed, the AdjustVent gives you precise control, allowing you to increase ventilation when ambient temperatures increase.

UK Plug only

VENTILATION & AIR CIRCULATION

Pro Flower Filter



Pro Flower Filters are premium grade carbon filters that will remove 99% of odours and impurities from your grow room. Each Pro Flower Filter includes 2 pre-filters.

Multiple Diameters & Lengths available.

VENTILATION & AIR CIRCULATION

Jubilee Clips



Jubilee Clips are a great way of attaching ducting to fans, filters and joints when you need a more secure fit. Each clip is easily adjustable for various sized ducting.

Available Sizes: 4 / 5 / 6 / 8 / 10 / 12 inches

For prices and latest RRP's visit
www.easy-grow.co.uk

PRO FLOWER FILTER

REMOVE 99% OF ODOURS

- Using the finest virgin Australian rc 412 granular carbon.
- Open air mesh design which maximises airflow.
- Removes 99% of odours and impurities from the air.
- Machine packed allowing more carbon, and less movement.





09.

GROWING

ACCESSORIES

GROWING ACCESSORIES

Plant Poles



Strong and durable Plant Poles to provide your flowering plants with the necessary support to protect even the heaviest branches.

Available Sizes: 4ft / 5ft / 6ft – Packs of 10

GROWING ACCESSORIES

Ridged Plant Poles



These extra strong 16mm thick Ridged Plant Poles provide your flowering plants with the necessary support to protect even the heaviest branches.

**Available Sizes: Thick – 4ft & 5ft – Packs of 10
Slim – 4ft / 5ft / 6ft – Packs of 10**

GROWING ACCESSORIES

Plant Supports



Strong and durable Plant Supports with a conical design to provide your flowering plants with the necessary support to protect even the heaviest branches.

Multiple diameters & lengths available.

For prices and latest RRP's visit
www.easy-grow.co.uk



EASYGROW

TOPTIPS!

The Ultra Flat Heater is the perfect product to help you keep a steady ambient temperature in your growing environment. It's also incredibly efficient!

GROWING ACCESSORIES

Ultra Flat Heater



The Ultra Flat Heater is an incredibly compact heating solution to your growing environment. It is resistant to humidity and maintains a temperature of 65°.

Available Size: 1200mm x 580mm

GROWING ACCESSORIES

Herb Dryer



Herb Dryer brings a simplicity to the herb drying process along with rapidly speeding up the process. It is a multi-rack dryer with internal carbon filtration system with motor driven fan for drying herbs. Available in regular and XL sizes.

Replacement filters available in both Regular & XL

GROWING ACCESSORIES

Plant Strapper



Save time and effort in your outdoor or indoor garden with the new Easy Grow Plant Strapper. Secure your plant stems and branches to supports, stakes & plant poles.

Comes with Staples & Ribbon (also sold seperately)

GROWING ACCESSORIES

Flat Gardening Wire



WIRE CUTTER INCLUDED

Easy Grow gardening wire is for undergirding climbing plants, tree branches, bushes, flowers' stems or vegetables. Spool enables the unwinding, a wire cutter is attached.

Available Size: 50mtr x 2mm

GROWING ACCESSORIES

Rope Ratchets



Rope Ratchet light fixture hangers allow the easy hanging of your growing environment equipment. Rope Ratchets pull tight, lock in place to avoid break or slip.

Sizes: Lightweight / Heavyweight / Jumbo / Tent

GROWING ACCESSORIES

Easy Snip Scissors



AVAILABLE WITH STRAIGHT OR CURVED BLADES

Easy Snips are a premium grade plant trimming scissor, designed to allow you to trim your plant with ease. Make a difference to the speed and ease of pruning your plants.

Available in Straight or Curved versions

GROWING ACCESSORIES

Trellis Netting



Protect and support your plants with the Easy Grow Trellis Netting. An extremely durable solution giving your plants the protection they need even in small spaces.

Available Size: 2mtr x 10mtr

GROWING ACCESSORIES

Stainless Steel Wire



PVC

UNCOATED

Heavy duty wire, ideal for general gardening use including tying, fixing, training and supporting. 50m Length. Available in uncoated or PVC coated.

Uncoated - 50m x 1.4mm / PVC Coated - 50m x 1.8mm

For prices and latest RRP's visit
www.easy-grow.co.uk

VAPR

LIQUID NANO SPRAYER



GROWING ACCESSORIES

VAPR Nano Spray Gun

The VAPR Liquid Nano Sprayer is a ULV (Ultra-Low Volume) mist dispenser. Ultra low volume means this sprayer will dispense high amounts of liquids at low pressure, which turns the liquid into a mist for greater coverage.

VAPR Liquid Nano Sprayer is wireless, with up to 2 hours effective battery life depending on use. Effective distance for the device is approximately 2m away from desired surface. The sprayer can be used in your home, office, public areas and on clothing depending on the liquid you are using.

GROWING ACCESSORIES

Quick Snip Scissors



Quick Snip Scissors, ready to display in a hanger containing 12 pairs of scissors in individual pockets for easy removal. Very durable and offers precision trimming of plants

Comes in pack of 12 pairs of scissors

GROWING ACCESSORIES

Urban Grow Glasses



Urban Grow Room lenses have been specially designed to reduce the glare from grow lights. Particularly HID lights that give off UV and IR rays.

Available Size: One Size

GROWING ACCESSORIES

Elastic Grow Nets



Grow nets are the perfect accompaniment to grow tents, allowing the support needed for plants to flourish.

Universal Size: 60cm x 60cm to 1.2m x 1.2m

For prices and latest RRP's visit
www.easy-grow.co.uk

GROWING ACCESSORIES

Protective Coveralls



Breathable fabric, constructed from 100% Polypropylene. Has front fastening zip plus elasticated hood, cuffs and ankles.

Available Size: Medium / Large / XL

GROWING ACCESSORIES

Carrier Bags



Plain carrier bags with patch handle, perfect for retail or general use. Available in black, ECO black, dark green or dark blue.

One Size: 15" x 18" x 3"

GROWING ACCESSORIES

Black Cable Ties



Strong black cable ties, made from durable plastic for secure fastening.

Available Sizes: 300mm x 4.8mm

GROWING ACCESSORIES

Nitrile Gloves



Blue Nitrile Gloves. An affordable product designed for great protection for your hands while handling nutrients and other substances in horticulture or hydroponics.

Available Sizes: Medium / Large / XL

GROWING ACCESSORIES

Thick Refuse Sacks



Stronger than your average bin bag, these durable thick refuse sacks are the perfect solution for everyday waste and garden waste.

Available Sizes: COMPACTOR SACK: 22.5 x 34 x 47" / 17.7 x 28.5 x 38.4"

GROWING ACCESSORIES

Packing Tapes



High quality tapes, suitable for manual carton sealing, packaging applications or for creating a stronger seal on boxes. Available in one size: 44mm x 66m.

Available Types: Fragile / Security / Clear / Brown

GROWING ACCESSORIES

Vinyl Gloves



Disposable blue Vinyl gloves, perfect for ensuring that hands are protected at all times. An excellent glove for everyday use and in the garden!

Available Sizes: Small / Medium / Large / XL

For prices and latest RRP's visit
www.easy-grow.co.uk

The background of the entire page is a dense, dark pattern of leaves, likely from a plant like a laurel or similar, in shades of dark grey and black. The leaves are elongated and pointed, with visible veins. They are arranged in a way that creates a textured, organic feel.

10.

EASY GROW INFORMATION

EASYGROW SUPPORT

sales@easy-grow.co.uk
0800 612 9099
+44 (0) 1472 346 900

Monday-Thursday 08:30-16:30
Fridays 08:30-16:00

Additional Information

Easy Grow deal with only the best suppliers on the market, here are links to their websites for further information relating to their brand and products.

Athena Nutrients - www.athenaag.com

Green Planet Nutrients - www.greenplanetnutrients.com

Remo Nutrients - www.remonutrients.com

RAW Soluble - www.npk-industries.com

BioNova - www.bionovanutrients.com

Exhale - www.exhaleco2bags.com

Hygrozyme - www.sipcoinnovations.com

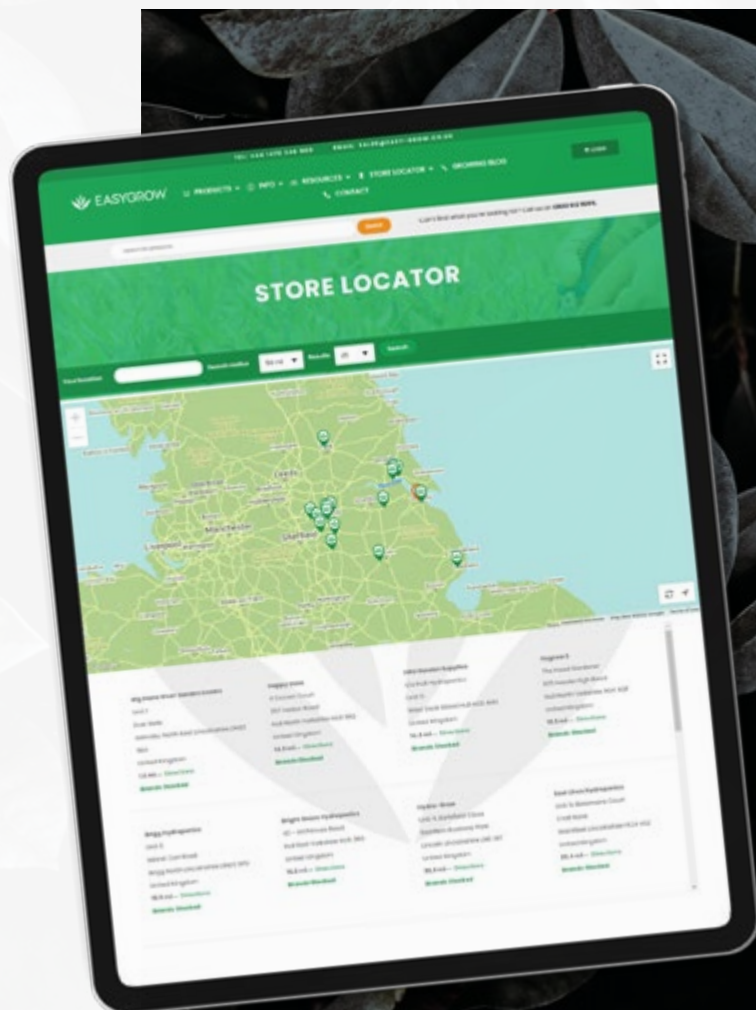
Plug Life - www.plug-life.co.uk

BioTabs - www.biotabs.nl

ONA Odour Neutraliser - onaonline.com

Lightite Sheeting - www.lightite.co.uk

Floor Secure - www.floorsecure.co.uk

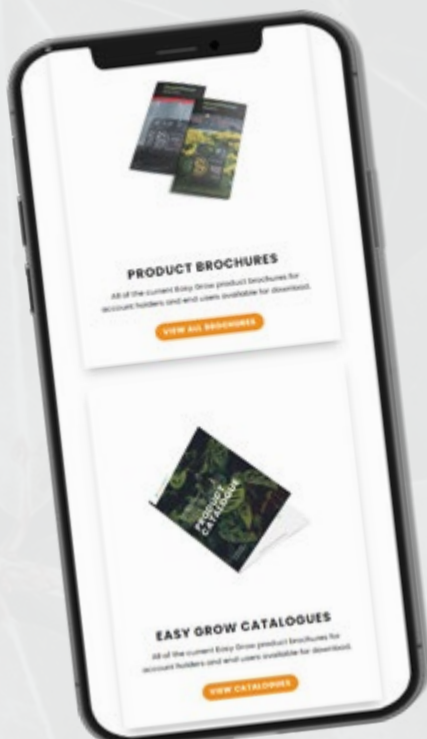


FIND YOUR CLOSEST STORE WITH OUR STORE LOCATOR!

We want to support our customers as much as possible, and one way we're doing that is by helping you find your local Easy Grow stockist.

Check out the Store Locator online at
www.easy-grow.co.uk/store-locator

EASYGROW RESOURCES



With Easy Grow, you have access to an entire library of online resources you can view and download. These resources include all of the safety information regarding our products, Certificates of Analysis, Product Brochures and the latest version of the Easy Grow Catalogue.

All of our resources are completely free to use and accessible on our website under the resources tab.

FEED CHARTS

Feed charts are specific recommendations and guidelines provided by nutrient companies to help users achieve the healthiest and best crop they can. Giving you maximum understanding over your plants. Feel free to download and print these as needed.

SAFETY DATA SHEETS

A safety data sheet, material safety data sheet, or product safety data sheets are documents that list information relating to occupational safety and health for the use of various substances and products. These are available for download and print.

ANALYTICAL SHEETS

We've created a library of certificates of analysis documents that are all produced by the brands we sell. These documents verify the contents of products you use to allow the end user to see all of our products conform to advised and legal requirement.

CATALOGUES & BROCHURES

You can download, view and print the latest Easy Grow catalogues from our website. Giving you the entire product list, complete with informative articles, product descriptions and handy tips!

Furthermore, most brands we sell have brochures which contain detailed information on that particular range of products. Some are available in multiple languages.

See all resources at:

www.easy-grow.co.uk/resources





The Easy Way to Grow



EASYGROW

Horticultural Wholesale

sales@easy-grow.co.uk

+44 (0) 1472 346 900

0800 612 9099

www.easy-grow.co.uk